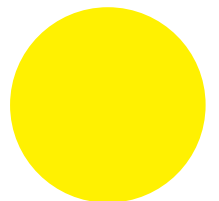




# PORTFOLIO

Lighting Design Academic Projects  
Architecture & Interior Design Professional Works

SHELLY WAN-CHIEN LIN



2024 Spring

40 W 14 ST 40 W 14 ST 40 W 14 ST 40 W 14 ST 40 W  
BLUR THE GRID BLUR THE GRID BLUR THE GRID BLUR THE  
DAYLIGHT FLUIDITY DAYLIGHT FLUIDITY DAYLIGHT  
TOWARD THE SKY TOWARD THE SKY TOWARD THE SKY  
EXPERIMENTAL LAB EXPERIMENTAL LAB EXPERIMENTAL LAB  
LIGHT JOURNEY LIGHT JOURNEY LIGHT JOURNEY LIGHT  
THE LUMINA CHRONICLES THE LUMINA CHRONICLES  
BIO-SHIMMER BIO-SHIMMER BIO-SHIMMER BIO-SHIMMER  
WORKS **PROFESSIONAL WORKS** PROFESSIONAL WORKS  
40 W 14 ST 40 W 14 ST 40 W 14 ST 40 W 14 ST 40 W  
BLUR THE GRID BLUR THE GRID BLUR THE GRID BLUR THE  
DAYLIGHT FLUIDITY DAYLIGHT FLUIDITY DAYLIGHT  
TOWARD THE SKY TOWARD THE SKY TOWARD THE SKY  
EXPERIMENTAL LAB EXPERIMENTAL LAB EXPERIMENTAL LAB  
LIGHT JOURNEY LIGHT JOURNEY LIGHT JOURNEY LIGHT  
THE LUMINA CHRONICLES THE LUMINA CHRONICLES

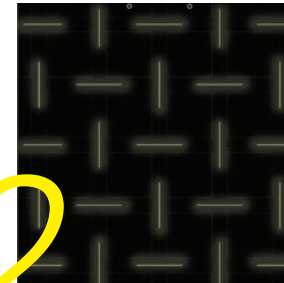
# Lighting Design Portfolio



1

## 40 W 14 St

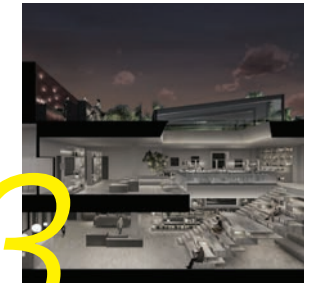
lighting design academic project  
\*individual work



2

## Blur the Grid

lighting design academic project  
\*individual work



3

## Toward the Sky

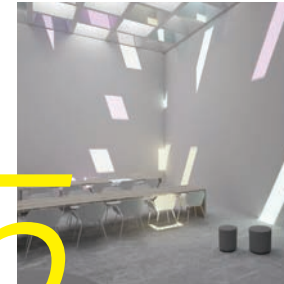
lighting design academic project



4

## MET 624 Journey

lighting & exhibition design  
academic project  
\*individual work



5

## Daylight Fluidity

lighting design academic project  
\*\*scholarship winner



6

## Experimental LAB

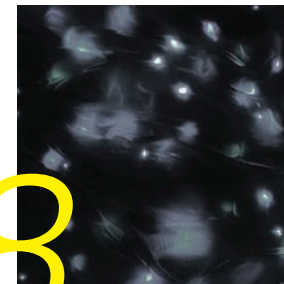
lighting design academic project



7

## the Lumina Chronicles

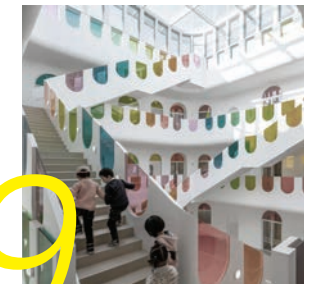
luminous object design project  
\*individual work



8

## Bio-shimmer

2023 IESNYC student lighting  
design competition  
\*\*Honorable mention



9

## Professional Works

architecture, interior and exhibition  
design projects

# 40 W 14 ST



SHIELLY WAN-CHIEN LIN

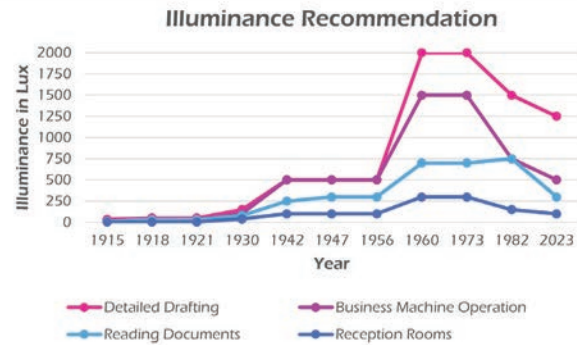
## RENEWAL: SPACIAL SEQUENCE

*Dec. 2023*

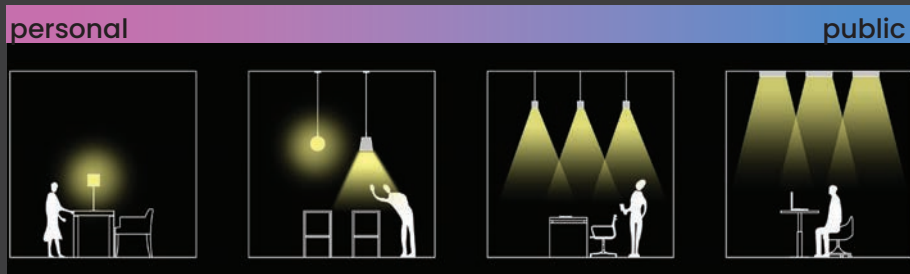
Project Type : Renovation proposal for a building  
Course : the Allied + Natural Systems Studio, 2023 Fall  
Work Type : Individual  
Design Duration : 3 months

- **Design Research**

**Evolution of Lights:**



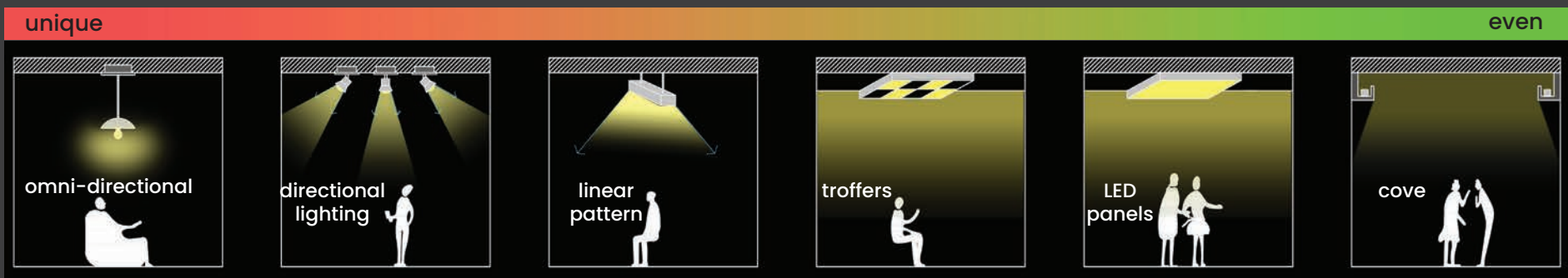
**Proximity**  
Luminaire mounting height



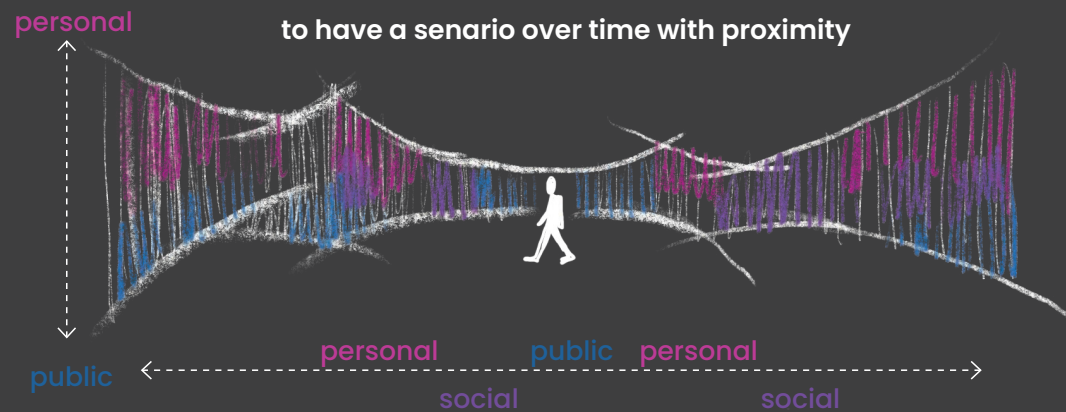
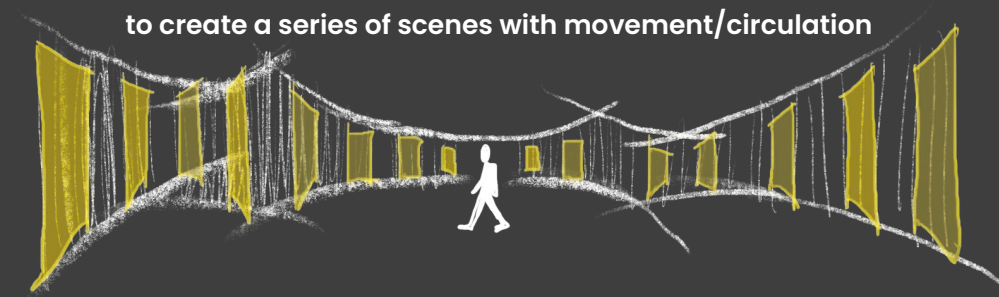
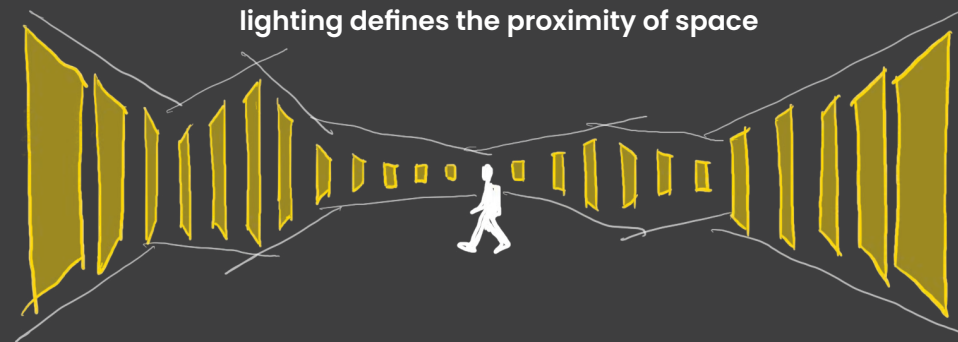
**Proximity**  
Facade Lighting Direction



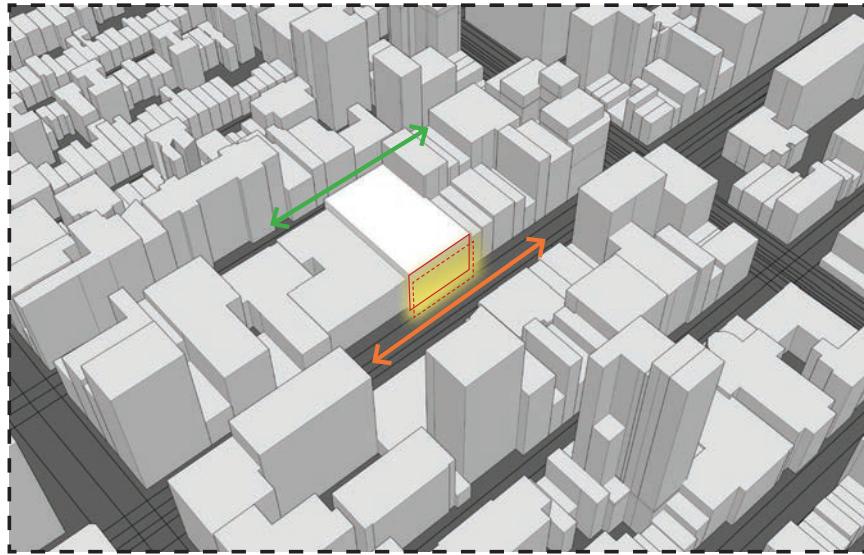
**Uniformity**  
Luminaire types



- Design Concept



- **Site Analysis**



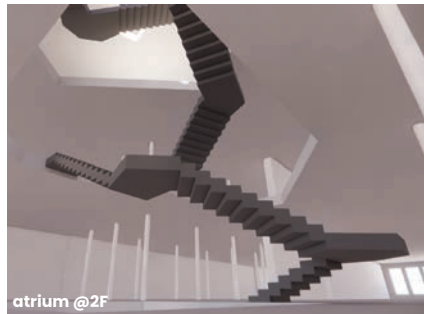
Facade lighting becomes a new layer in the city.



atrium @5F



lightwell @5F



atrium @2F

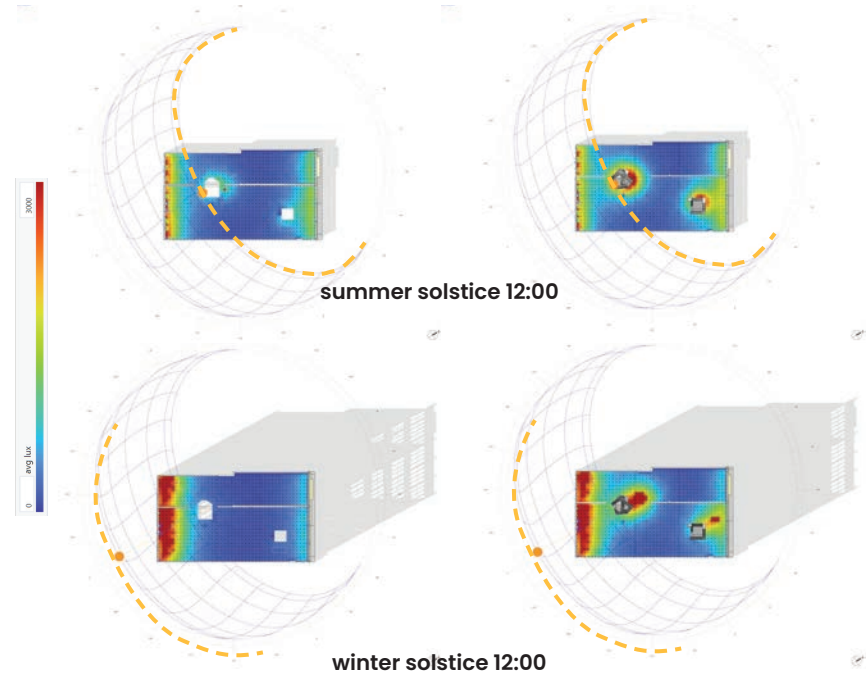


lightwell @2F

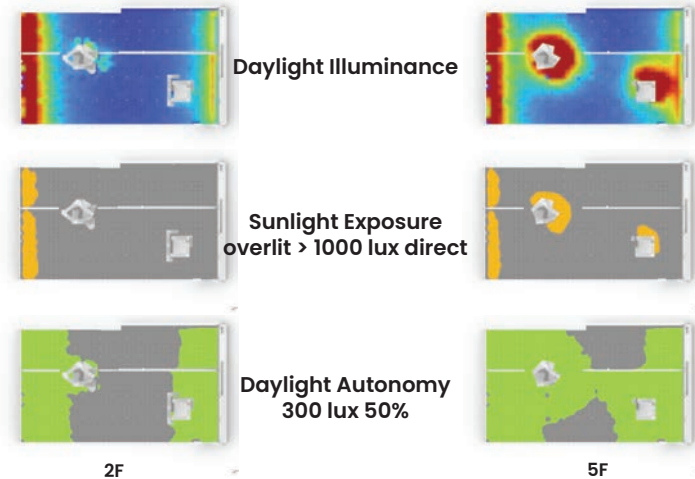
To create one atrium and one lightwell in the existing building.

- **Daylight Analysis**

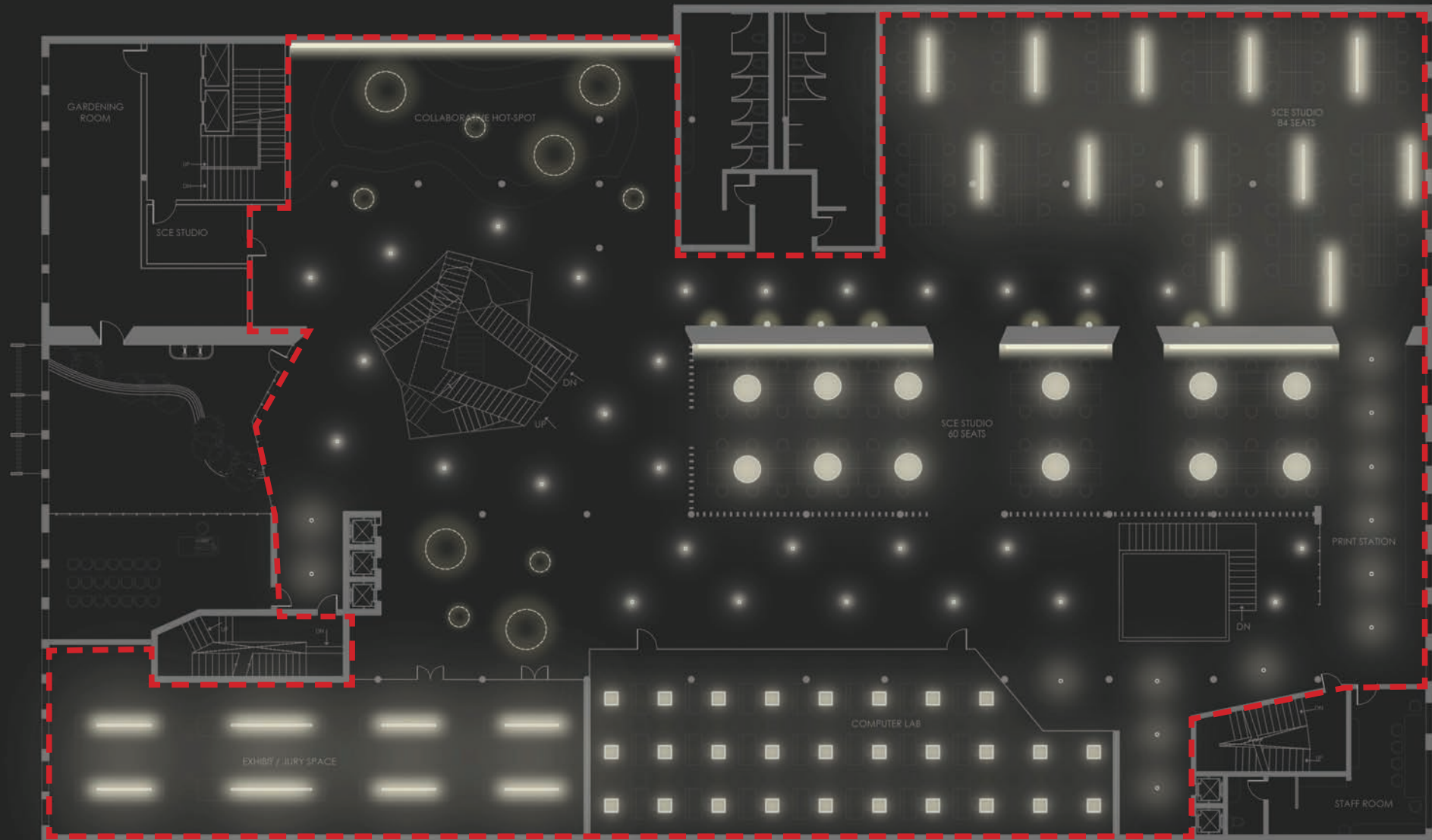
**Point-in-time Illuminance**



**Daylight Availability**



- Electric Lighting Design



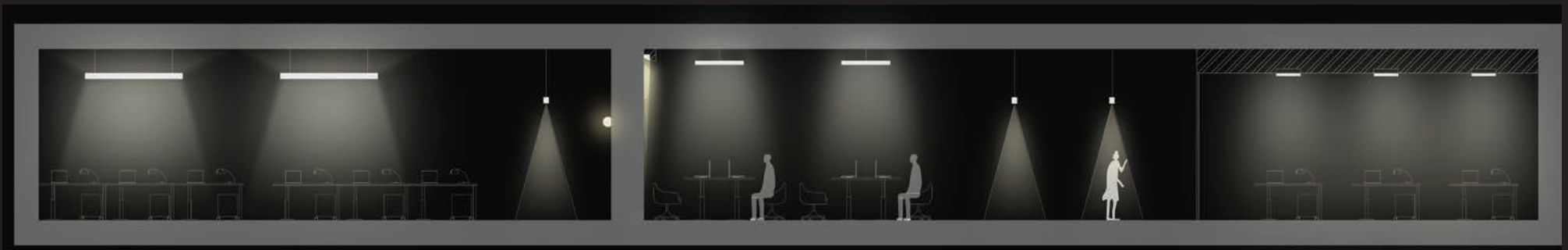
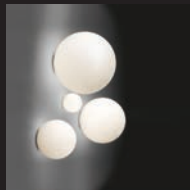
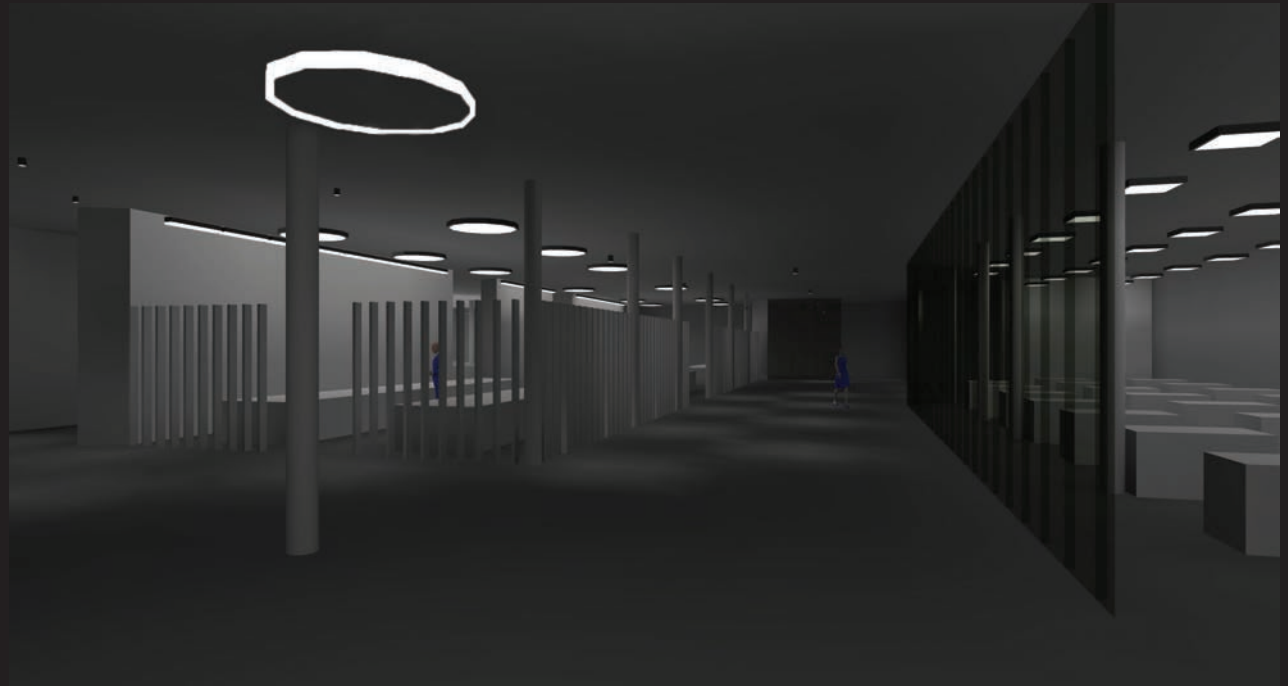
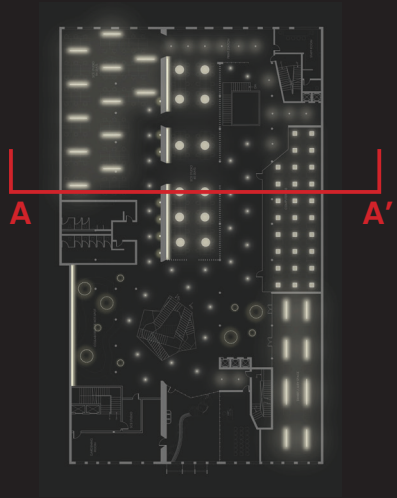
Design Scope

5F Floor Plan

SHELLY WAN-CHIEN LIN

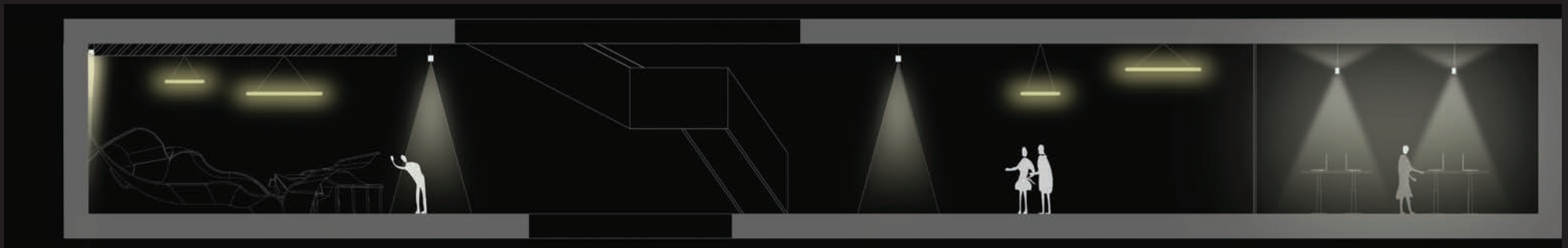
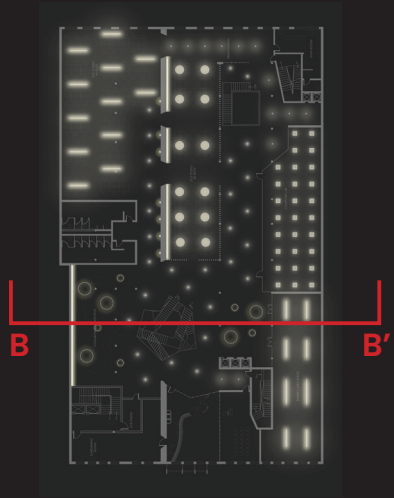


• Electric Lighting Design



Section AA'

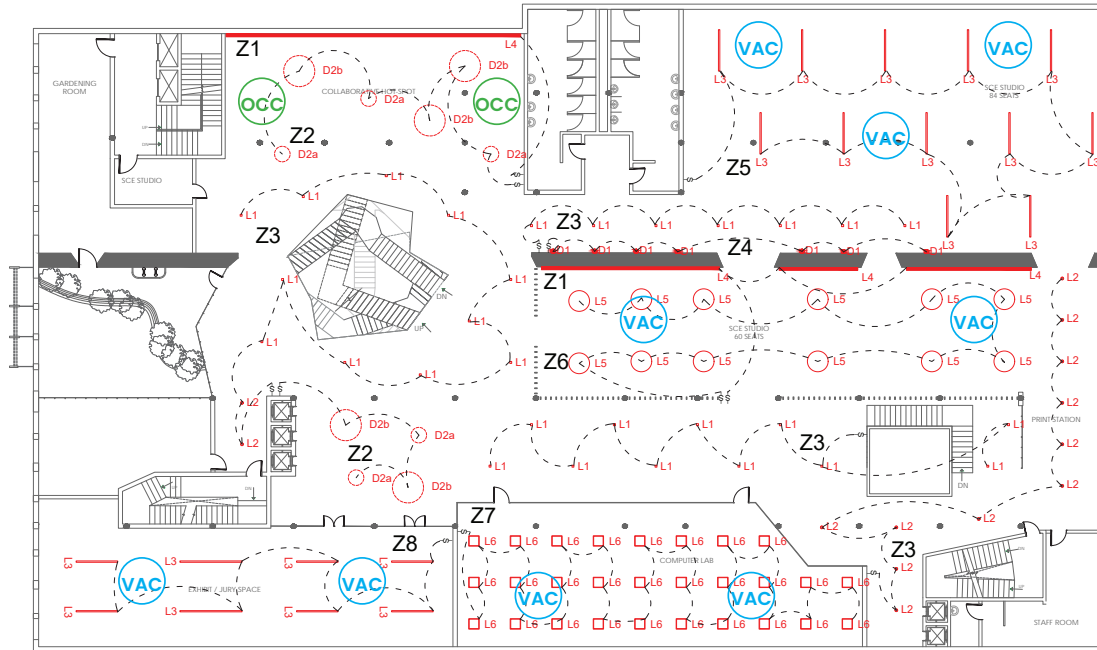
• Electric Lighting Design



Section BB'

# Lighting Control

## Control Plan



Symbol	Qty	Label	Arrangement	Description	LLF	Luminaire Lumens	Luminaire Watts	Total Watts
	7	D1	Single	Artemide 0112010A	0.800	1356	13	91
	5	D2a	Single	DONA LED 3FT 3500K MED 60W	0.800	4308	57.07	285.35
	5	D2b	Single	DONA LED 6FT 3500K MED 120W	0.800	8904	120	600
	29	L1	Single	CNRD-15X3-30KS-25-S-WH-MOD	0.800	1287	14.7	426.3
	12	L2	Single	OU19-C72K	0.800	1360	13.2	158.4
	42	L3 DN	Single	104574920CRT-010 L54 UPDN 4FT 3500K MED MED UNV DB	0.800	4989	56	2352
	42	L3 UP	Single	104574920CRT-010 L54 UPDN 4FT 3500K MED MED UNV DB	0.800	4989	56	2352
	32	L4	Single	CPM-LED-4FT-3500K-LOW-RG	0.800	1981	20.24	647.68
	12	L5	Single	LUCIE-CIRCLE-4FT-3500K-MED	0.800	6387	119	1428
	28	L6	Single	DBSO-2X2-HIGH-4000K	0.800	3342	35.2	985.6

## Lighting Control Schedule

Area	Zone	Lighting Control Schedule								Dimming	Driver	Sensor
		Fixture Type	Quantity	Linear Ft.	Unit	Watt	Unit	Voltage	Total Watts			
Accent Wall	Z1	L4	130	1	ft	5	W/ft	UNV	650	No	DALI-2	
Collaborate Space	Z2	D2a	5	-	ea	60	W	UNV	300	No	DALI-2	OCC
		D2b	5	-	ea	120	W	UNV	600	No	DALI-2	OCC
Passageway	Z3	L1	29	-	ea	9	W	UNV	261	Yes	DALI-2	
		L2	13	-	ea	11	W	UNV	143	Yes	DALI-2	
Passageway	Z4	D1	7	-	ea	5	W	UNV	35	Yes	0-10V	
SCE Studio 1	Z5	L3	24	4	ft	14	W/ft	UNV	1344	Yes	DALI-2	VAC
SCE Studio 2	Z6	L5	12	-	ea	119	W	UNV	1428	Yes	DALI-2	VAC
Computer LAB	Z7	L6	28	-	ea	40	W	UNV	1120	Yes	0-10V	VAC
Exhibit Space	Z8	L3	18	4	ft	14	W/ft	UNV	1008	Yes	DALI-2	VAC

## Scene Setting Schedule

Scene	Scene Setting Schedule							
	Z1	Z2	Z3	Z4	Z5	Z6	Z7	Z8
No Class	100%	10%	100%	OFF	10%	10%	OFF	OFF
Studio time - daytime	30%	100%	100%	60%	60%	60%	OFF	OFF
Studio time - nighttime	100%	100%	100%	100%	100%	100%	OFF	OFF
LAB time	100%	100%	100%	60%	10%	10%	100%	OFF
Exhibition time	100%	100%	100%	60%	10%	10%	OFF	100%

# • Lighting Control

## Control Narrative

The lighting control narrative for the SCE 5F studio project outlines the design intent for interior lighting controls. The primary objective is to establish a versatile lighting system that accommodates various functions during both daytime and nighttime, including specific settings for rooms with special purposes.

System-configured scenes seamlessly transition between daytime and nighttime functionalities. In specific classrooms, users have the option to manually switch between different scenes using the control panel recessed on the wall.

In public areas such as collaborative spaces and passageways, **occupancy sensors** will be employed for automated lighting control. Studios and classrooms, on the other hand, will utilize **vacancy sensors**.

For general lighting in passageways and classrooms, control zones will remain at a constant illumination without dimming. In open studio spaces, both general and decorative lighting will be dimmed to **60%** during the **daytime** or utilize **Astronomical Time Clock** for optimal brightness. During **non-class hours**, the general lighting in open studios will be dimmed to **10%**, with an exception for passageway lighting, which will maintain a slightly higher illumination for emergency considerations.

For user interface, wall mounted switch and **dimmer knobs** are preferred since the users are students so it should be easier for everyone to use the control components.



dimmer knobs



switch



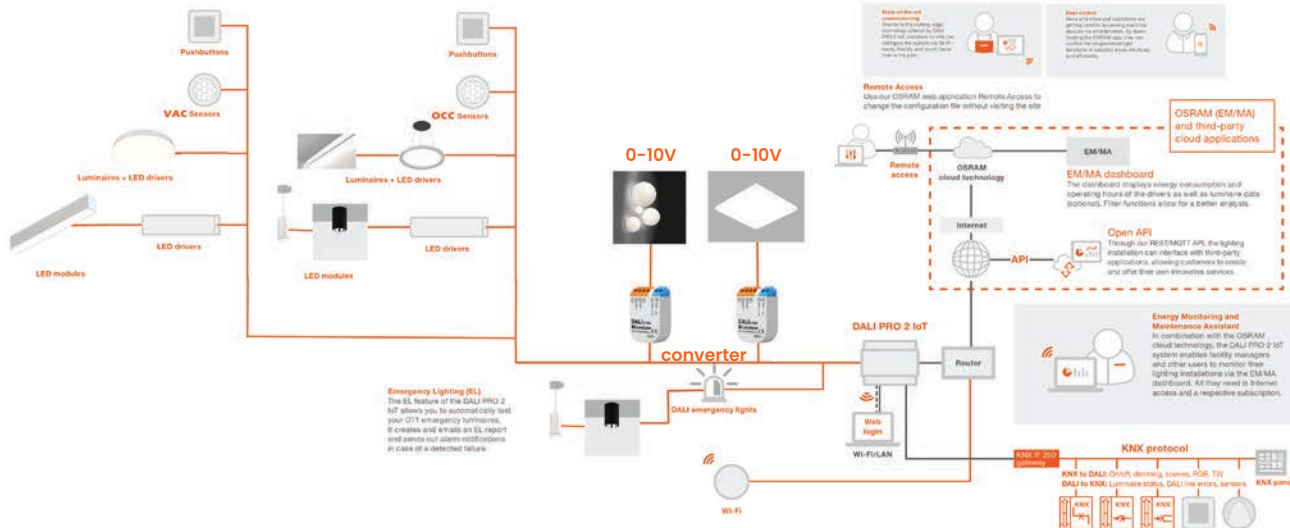
Astronomical Time Clock



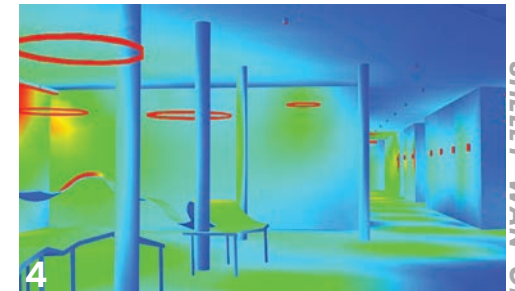
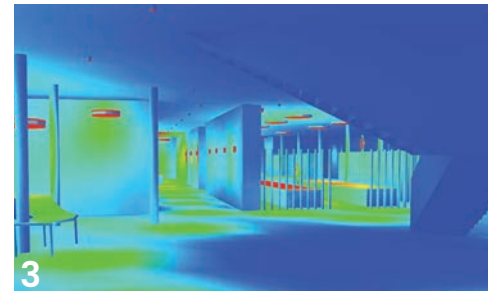
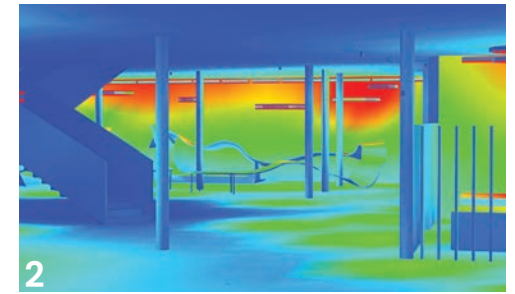
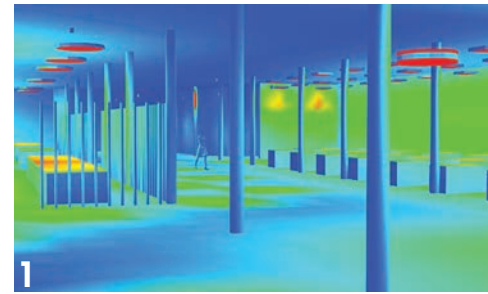
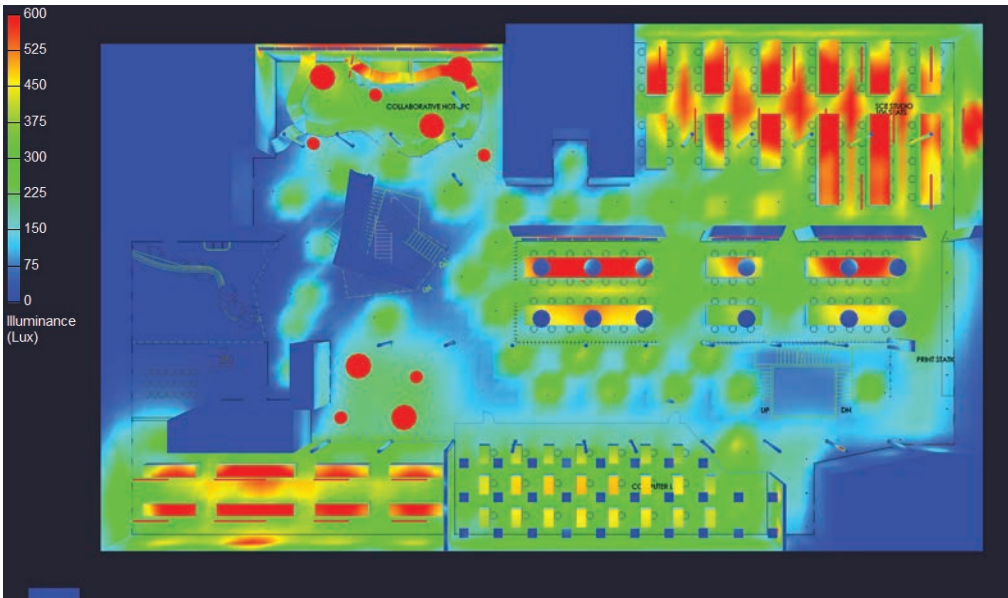
OCC/VAC sensors

## Control System Intent

### DALI-2



# • Illuminance Calculation



SHELLY WAN-CHIEN LIN










Label	Area	Total Watts	LPD
LPDArea_1	19364	9326.342	0.482

Label	CalcType	Units	Avg	Max	Min	Avg/Min	Max/Min
Art Studio 1	Illuminance	Lux	398.49	578.3	146.2	2.73	3.96
Art Studio 2	Illuminance	Lux	323.66	387.5	128.2	2.52	3.02
Exhibition	Illuminance	Lux	457.84	740.0	170.2	2.69	4.35
Lounge	Illuminance	Lux	169.00	345.1	54.4	3.11	6.34
Passageway	Illuminance	Lux	160.67	610.5	36.4	4.41	16.77

**contrast ratio 1:2:6**

intentionally design the contrast ratio in the sharing space to differentiate the boundary between different program instead of using physical partition wall

• **Fixture Schedule**

Luminaire Fixture Schedule							
TYPE	IMAGE	DESCRIPTION	MANUFACTURER CATALOG #	LAMP QTY.	INPUT WATTS	VOLTAGE	LOCATIONS & NOTES
L1		General: 45° Cable Mounted Downlight, 3" round aperture, Solite lens, 1175lm output LED module, CRI 90+, 3500K Finish: White Accessories: Honeycomb Louver Dimming: DALI-2 0.1%	CNRD-9X3-35KS-45-S-WH-MOD	29	9W	UNV	Locations: 5F Area: Passageway
L2		General: 45° Surface mounted Downlight, 3" round aperture, 1600lm output LED module, CRI 90+, 3500K Finish: Black Accessories: Honeycomb Louver Dimming: DALI-2 1%	QUI9_C72K	13	11W	UNV	Locations: 5F Area: Passageway
L3		General: Pendant indirect/direct Linear, 4" aperture, 4 ft length, 917lm output LED module, CRI 90+, 3500K Finish: White Accessories: Flat Diffuser Optics Dimming: DALI-2	LS4-UPDN-4FT-3500K-MED-MED-UNV-DB	42	14W	UNV	Locations: 5F Area: Studio
L4		General: Recessed Wall Washer, 5.3" aperture, Cusermized length, 483m/ft output LED module, CRI 90+, 3500K Finish: White Accessories: Regressed lens optics Dimming: DALI-2	CPM-LED-4FT-3500K-LOW-RG	130	5W/ft	UNV	Locations: 5F Area: Accent Wall
L5		General: Recessed round fixture, 4' aperture, 6387lm output LED module, CRI 90+, 3500K Finish: White Accessories: Standard Diffuser Optics Dimming: DALI-2	LUCIE-CIRCLE-4FT-3500K-HIGH	12	119W	UNV	Locations: 5F Area: Studio
L6		General: Recessed square fixture, 2x2', 3340lm output LED module, CRI 90+, 4000K Finish: White Accessories: frosted acrylic drop below lens Dimming: 0-10V	DBSQ-2X2-HIGH-4000K	28	40W	UNV	Locations: 5F Area: Computer LAB
D1		General: wall mounted spherical luminaire, 4" diameter, 353lm output LED module, CRI 80+, 3500K Finish: White Dimming: 0-10V Warm Dim	Artemide 10391 10A	7	5W	UNV	Locations: 5F Area: Passageway
D2a		General: Decorative luminaire, 3' diameter, 4136lm output LED module, CRI 90+, 3500K Finish: White Dimming: DALI-2	DONA-LED-3FT-3500K-MED-60W	5	60W	UNV	Locations: 5F Area: Collaborate Space
D2b		General: Decorative luminaire, 6' diameter, 8904lm output LED module, CRI 90+, 3500K Finish: White Dimming: DALI-2	DONA-LED-6FT-3500K-MED-120W	5	120W	UNV	Locations: 5F Area: Collaborate Space

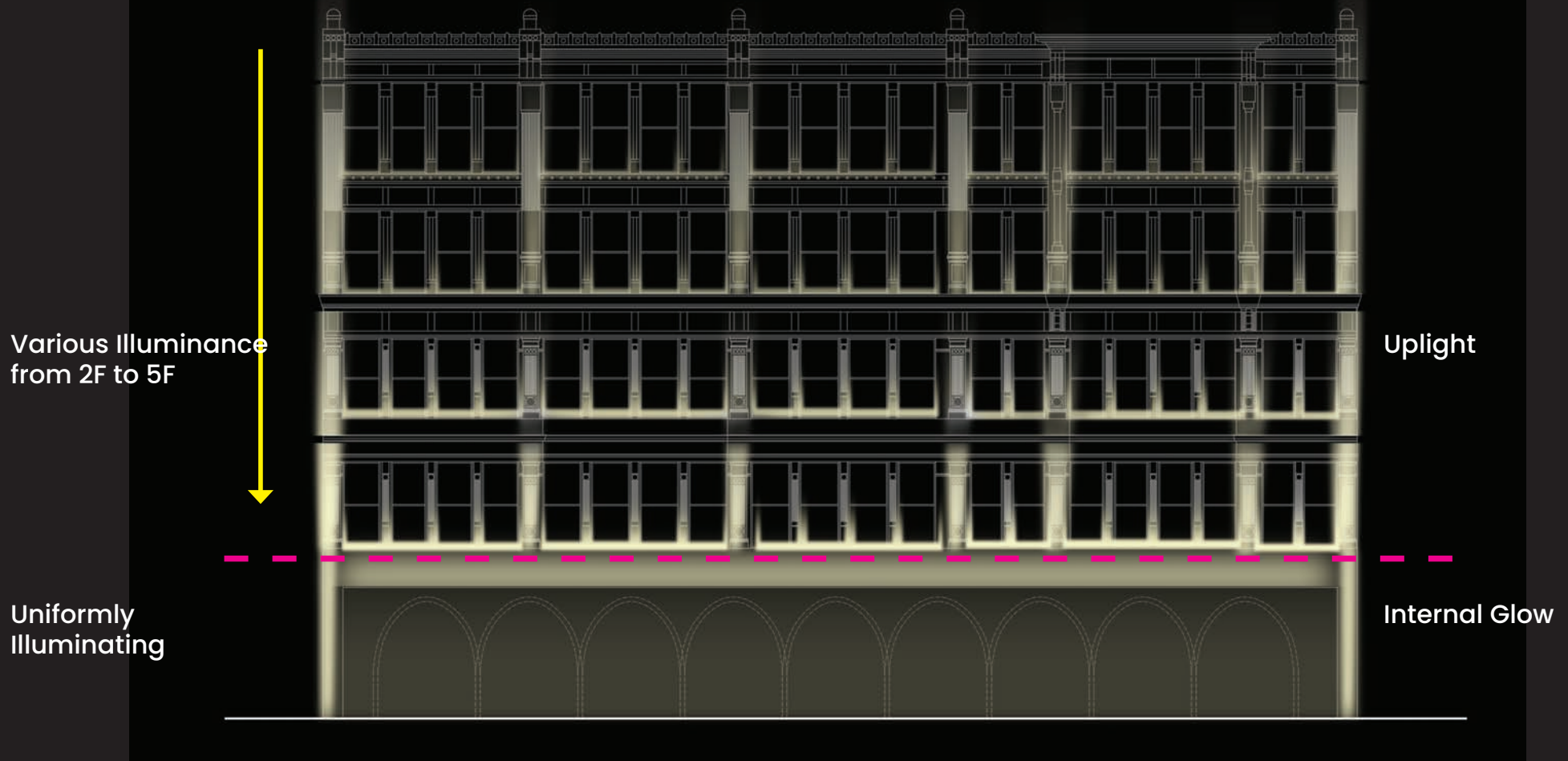
- Interior Perspective



- Facade Lighting Design

Lighting: a catalyst for placemaking

### 14th ST Historical Facade



SHELLY WAN-CHIEN LIN

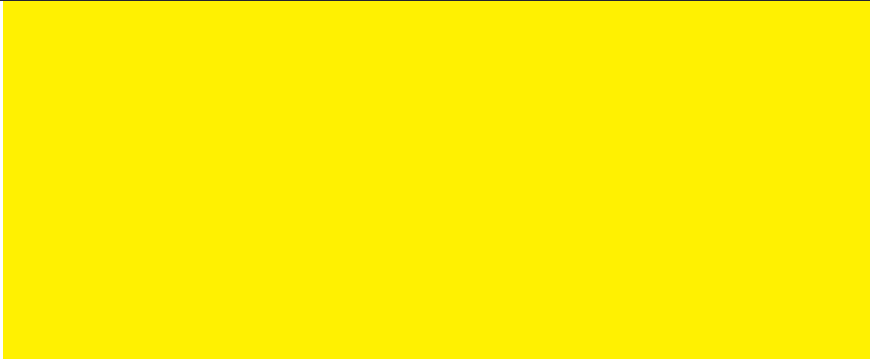
Sense of Rhythm



# BLUR THE GRID



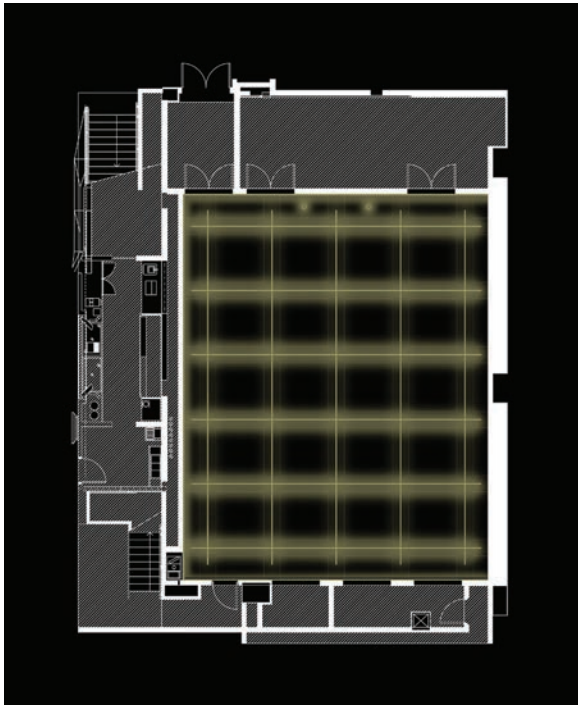
SHELLY WAN-CHIEN LIN



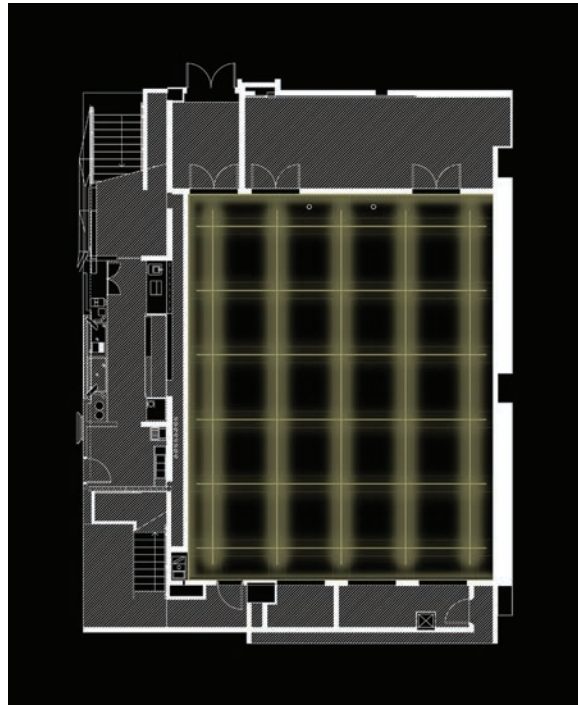
**Oct. 2022**

Project Type : Lighting design of a lecture hall with multi-function  
Course : Studio 1 Light, Vision, & Representation, Fall 2022  
Work Type : Individual work  
Design Duration : 3 weeks

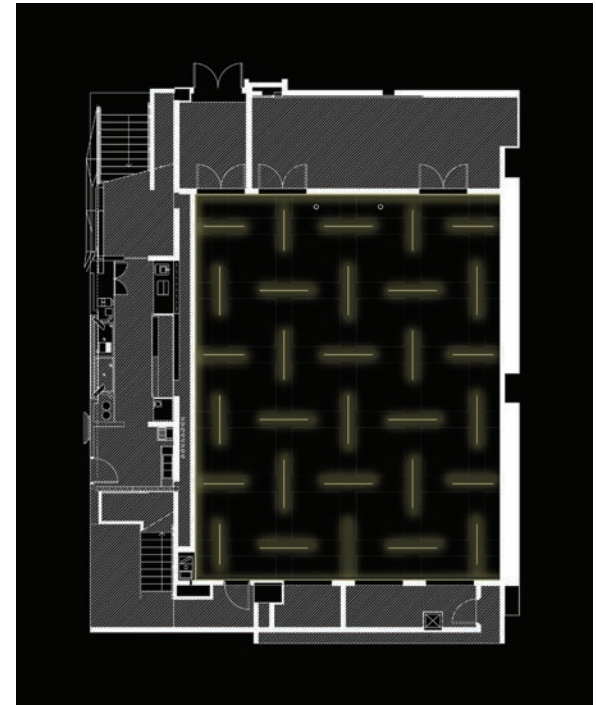
- Lighting Layout



• Classroom



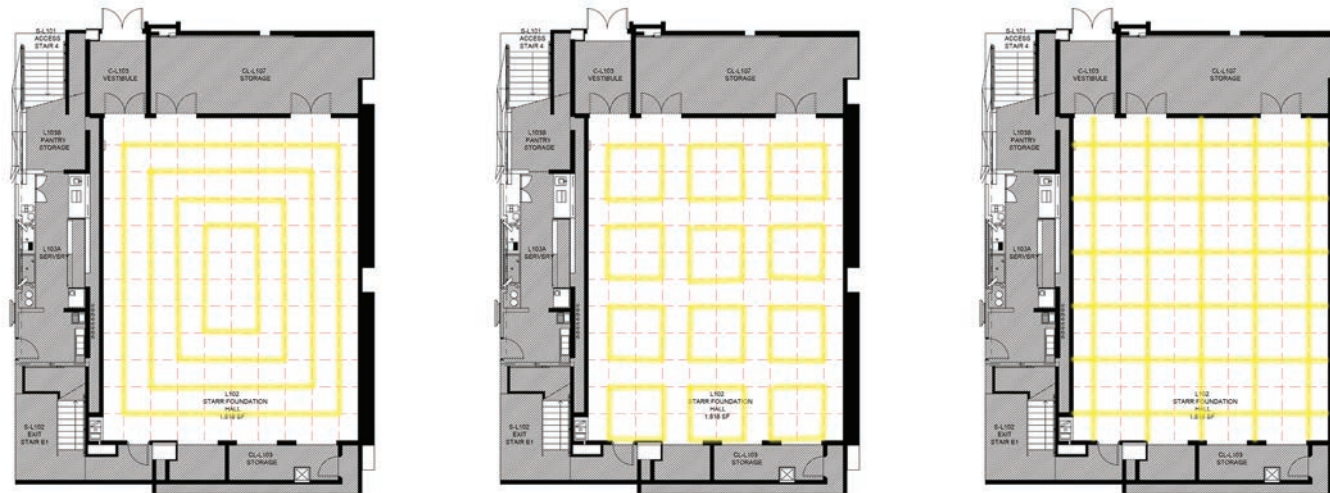
• Lecture



• Yoga

- Design Process
- Design schemes

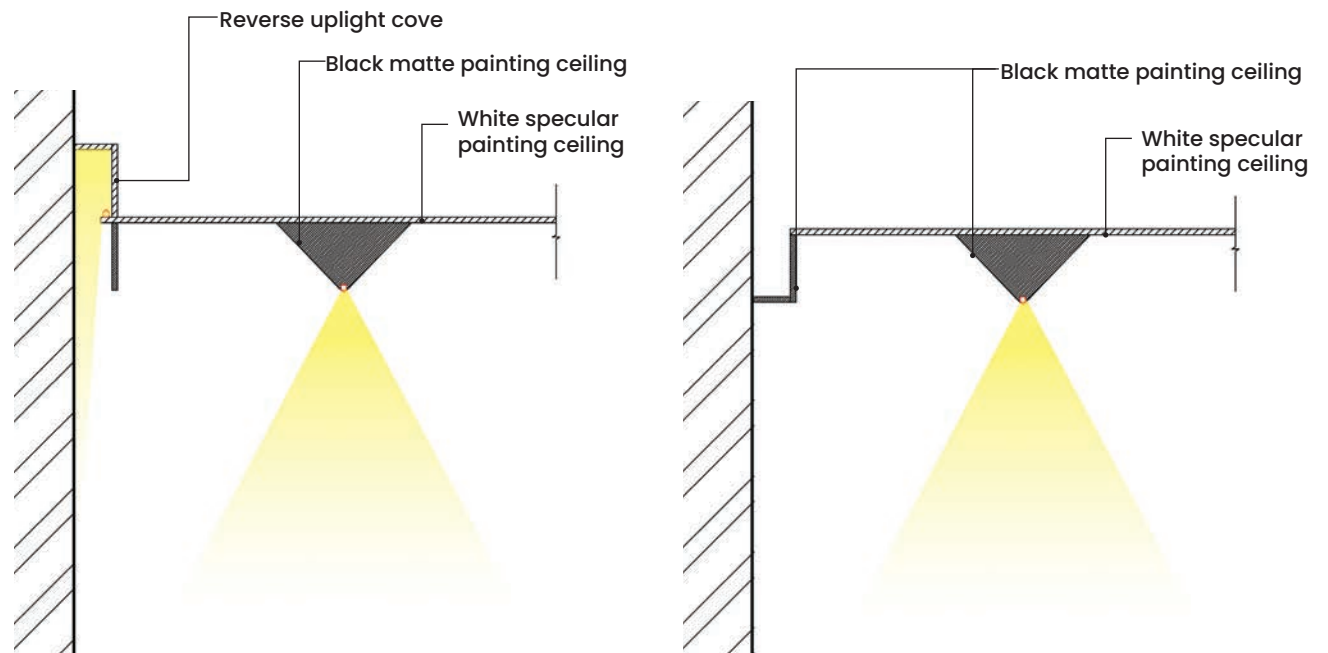
- Lighting Fixtures



- Reference Images



- Details



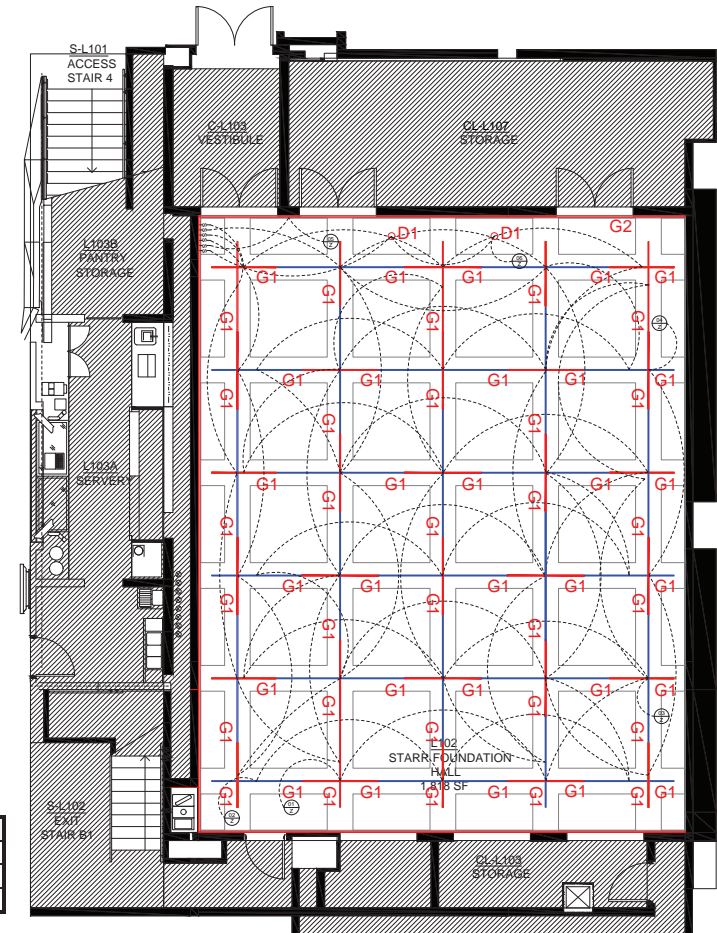
## • Lighting Layout & Control Zone

### Lighting Control Narrative:

Below is the lighting control narrative for the project Starr Foundation Hall. This includes the design intent for the interior lighting controls. The goal is to provide a multi-scene lighting system for these three functions - classroom, lecture, and yoga. Users can manually switch to the different scenes through the control panel recessed on the wall.

- 1. Classroom:** switch on Z1, Z2, Z3, Z4, Z5, and Z6 at lighting levels below:  
Z1, Z2, Z5, Z6 @100%  
Z3, Z4 @30%
- 2. Lecture:** switch on Z1, Z2, Z3, Z4, and Z5 at lighting levels below:  
Z3, Z4, Z5 @100%  
Z1, Z2 @30%
- 3. Yoga:** switch on Z1, Z3, and Z5 at lighting levels below:  
Z1, Z3, Z5 @60%

Symbol	Fixture Type	Description	Specification
—	G1	Grazer	LED 3W (per ft) / 3000K
- - -	G2	Grazer	LED 1.5W (per ft) / 3000K
○	D1	Adjustable Downlight	LED 12W / 40° / 3000K



SHELLY WAN-CHIEN LIN

## • Lighting Control Schedule

AREA	ZONE	FIXTURE				LOAD				DIMMING	EQUIP	SENSOR	NOTES
		Fixture Type	Quantity	Linear Ft.	Unit	Watt	Unit	Voltage	Total Watts				
INTERIOR													
Starr Foundation Hall	z01	G1	83	1	ft	3	W/LF	UNV	249	Y	0-10V	VAC	MANUAL ON/OFF
	z02	G1	125	1	ft	3	W/LF	UNV	375	Y	0-10V	VAC	MANUAL ON/OFF
	z03	G1	83	1	ft	3	W/LF	UNV	249	Y	0-10V	VAC	MANUAL ON/OFF
	z04	G1	146	1	ft	3	W/LF	UNV	438	Y	0-10V	VAC	MANUAL ON/OFF
	z05	G2	122	1	ft	1.5	W/LF	UNV	183	Y	0-10V	VAC	MANUAL ON/OFF
	z06	D1	2	-	ea	12	W	UNV	24	N	NONDIM	VAC	MANUAL ON/OFF

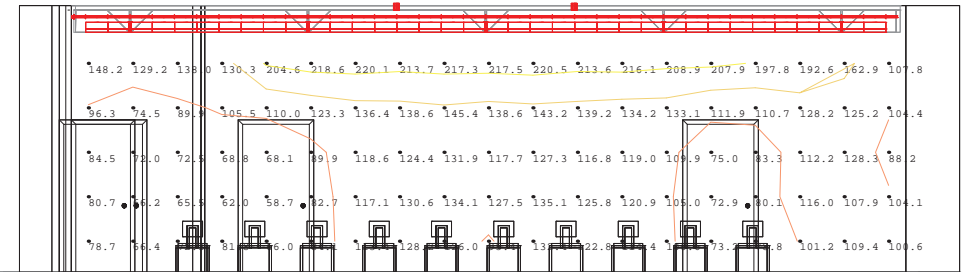
Scene	Control Zone					
	Z1	Z2	Z3	Z4	Z5	Z6
Classroom	100%	100%	30%	30%	100%	100%
Lecture	30%	30%	100%	100%	100%	0%
Yoga	60%	0%	60%	0%	60%	0%

- Program: Classroom



Floor Plan

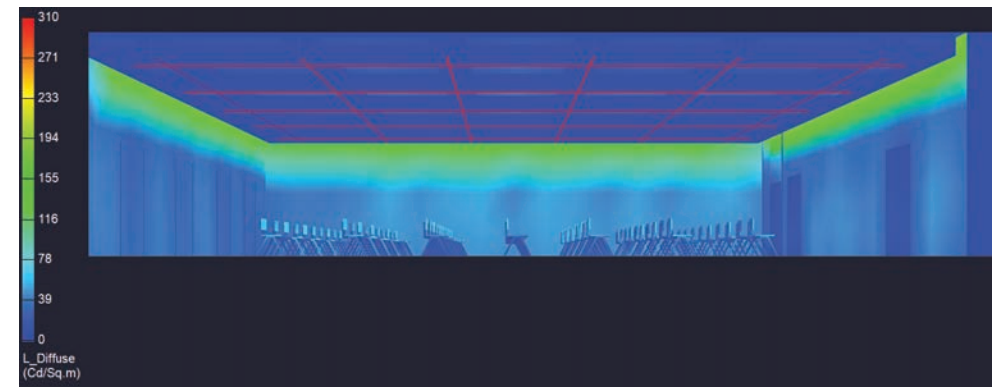
Value (Lux)	Color	Value (Lux)	Color	Value (Lux)	Color
50	Red	250	Green	450	Purple
100	Orange	300	Cyan	500	Dark Purple
150	Yellow	350	Blue	550	Dark Purple
200	Yellow	400	Dark Blue	600	Dark Purple



Elevation



Rendered Section



Pseudo Color of Luminance

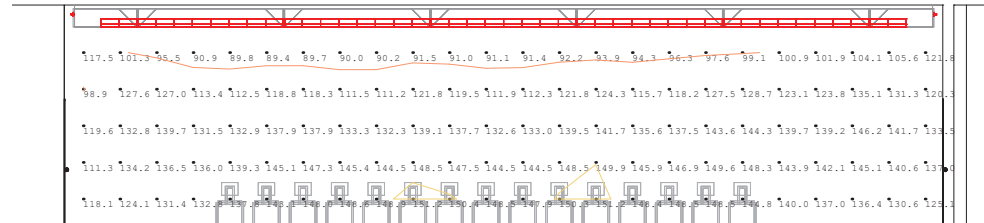
SHELLY WAN-CHIEN LIN

- Program: Lecture



Floor Plan

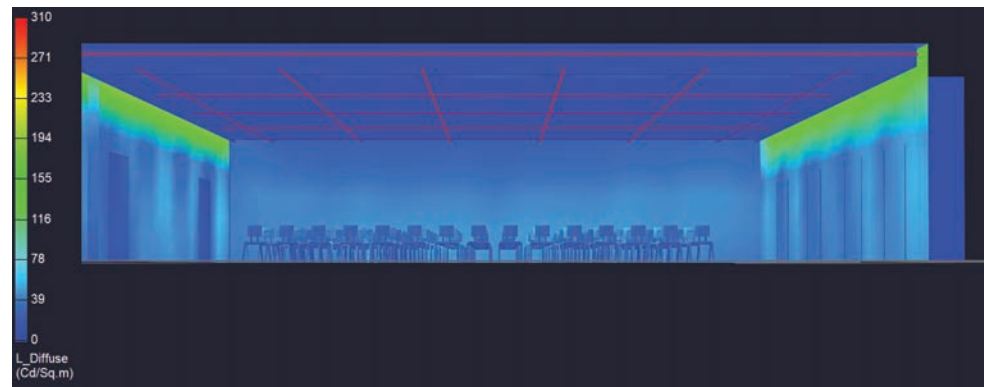
Value (Lux)	Color	Value (Lux)	Color	Value (Lux)	Color
50	Red	250	Green	450	Purple
100	Orange	300	Cyan	500	Dark Purple
150	Yellow	350	Blue	550	Dark Purple
200	Yellow	400	Dark Blue	600	Dark Purple



Elevation



Rendered Section



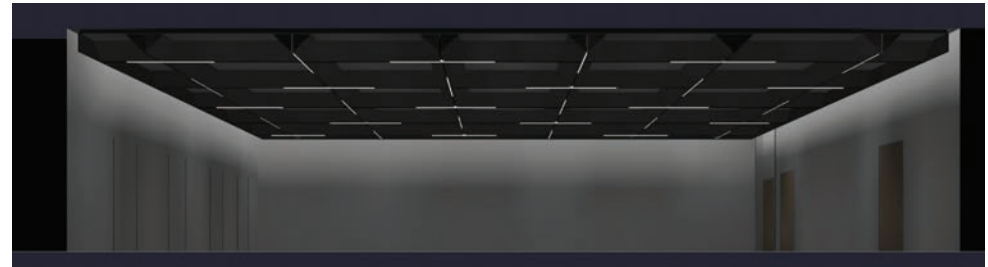
Pseudo Color of Luminance

- Program: Yoga



Floor Plan

Value (Lux)	Color	Value (Lux)	Color	Value (Lux)	Color
50	Red	250	Green	450	Purple
100	Orange	300	Cyan	500	Dark Purple
150	Yellow	350	Blue	550	Dark Purple
200	Yellow	400	Blue	600	Purple



Rendered Section



Pseudo Color of Luminance



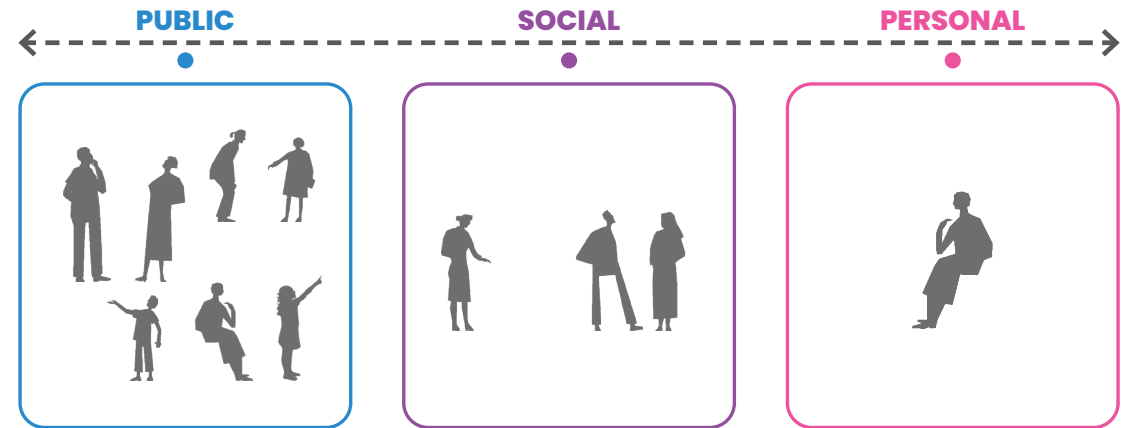
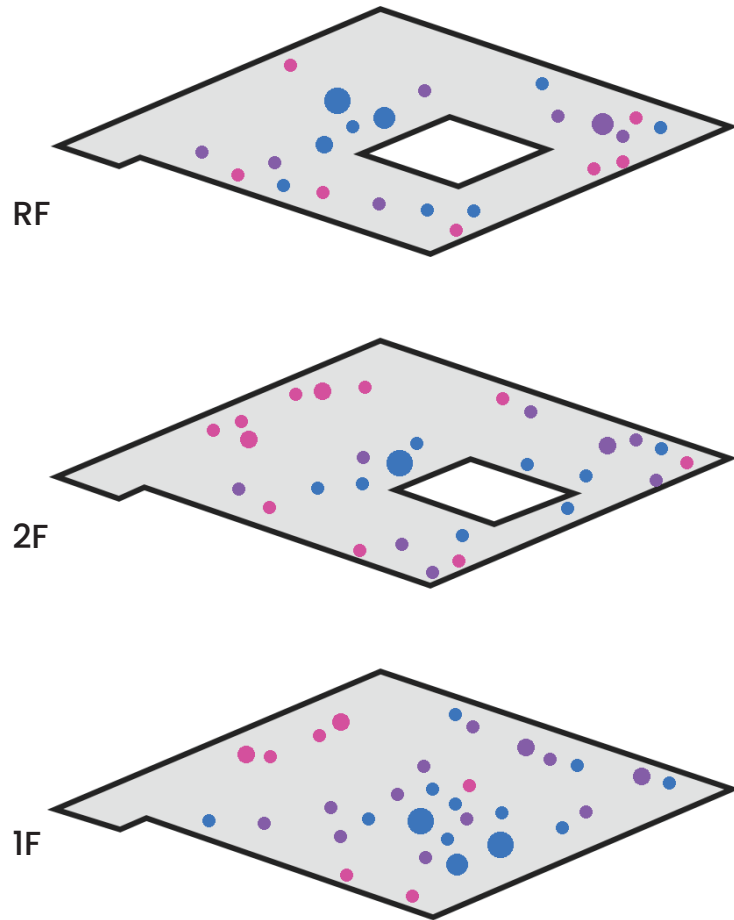
# TOWARD THE SKY

*May 2023*

Project Type : Renovation of a two-story library  
Course : Studio 2 Natural & Technological Light, 2023 Spring  
Work Type : Teamwork (Team of Four)  
Design Duration : 6 weeks



- Design Concept



- Floor Plan



First Floor Plan



Second Floor Plan

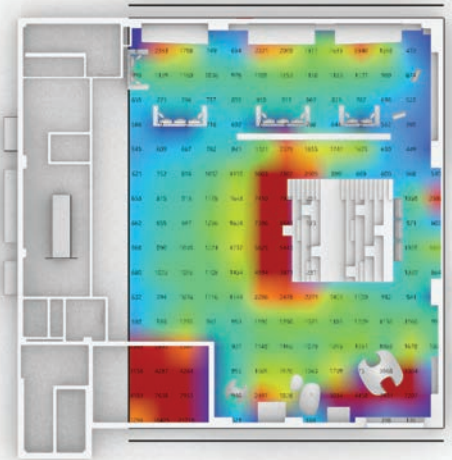
- Daylight Availability Analysis

Illuminance

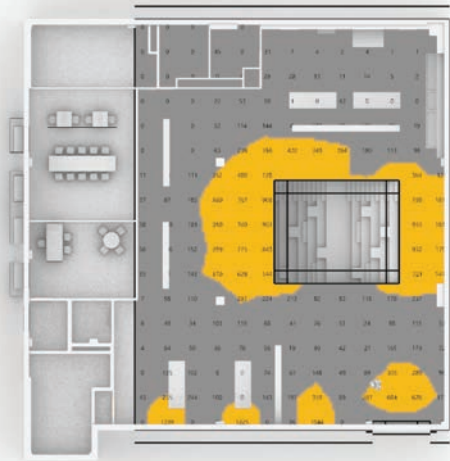
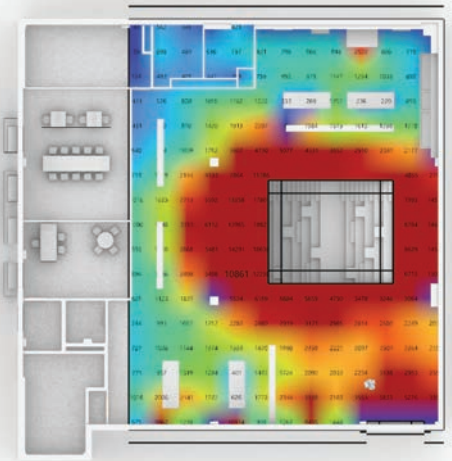
Annual Sunlight Exposure

Spatial Daylight Autonomy

First Floor



Second Floor



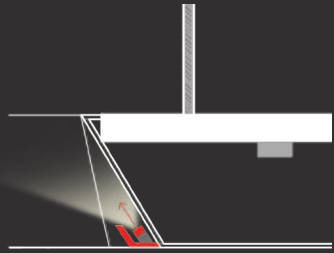
Overlit (>1000 lux direct)

Autonomous (>300 lux)

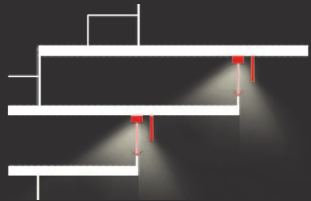


- **Electric Lighting Design Concept**

- Atrium & Activity Area



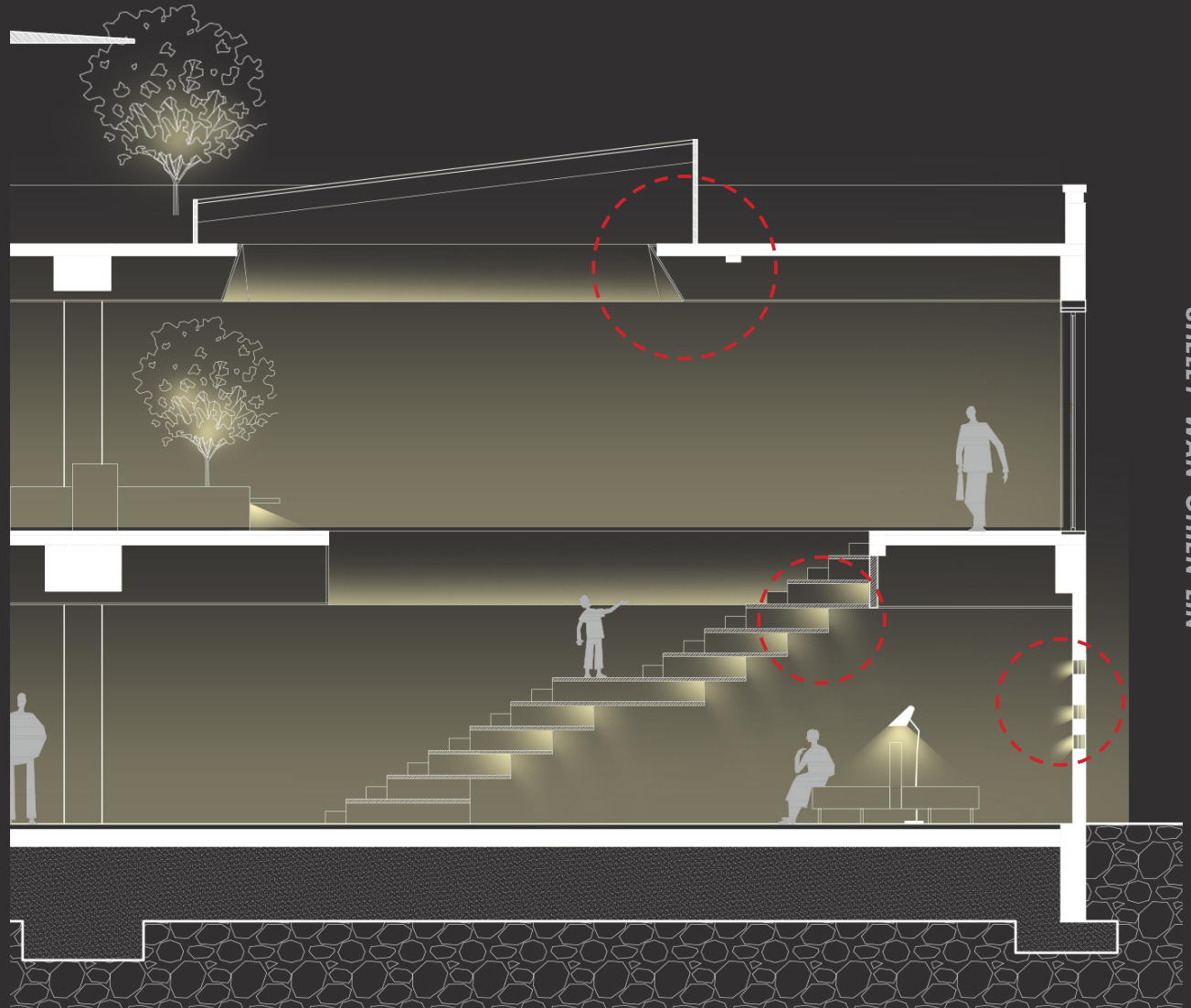
LED linear at bulkhead



LED linear at bookcase



Downlights at brick wall



SHELLY WAN-CHEN LIN

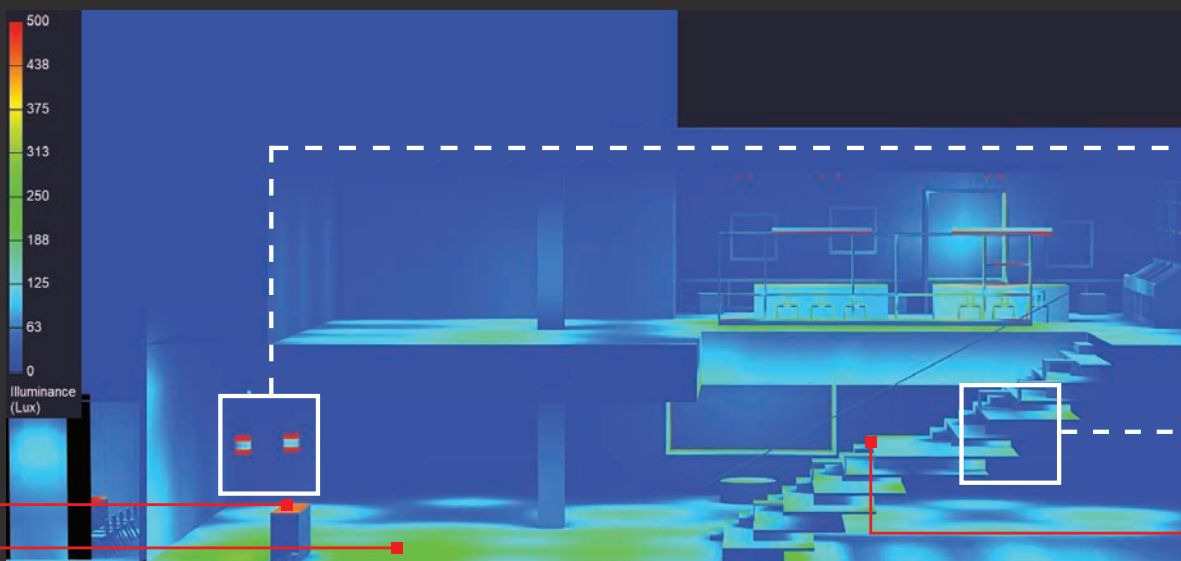
- **Illuminance Calculation**

- Atrium & Activity Area



IESNYC Recommendation Illuminance level  
(Entrance & Atrium)

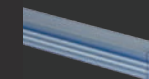
- @ Reception Counter : 500 lux
- @ Entrance Floor : 100 lux
- @ Staircase : 100 lux



Reception Counter  
450 - 500 lux  
Entrance Floor  
250 lux



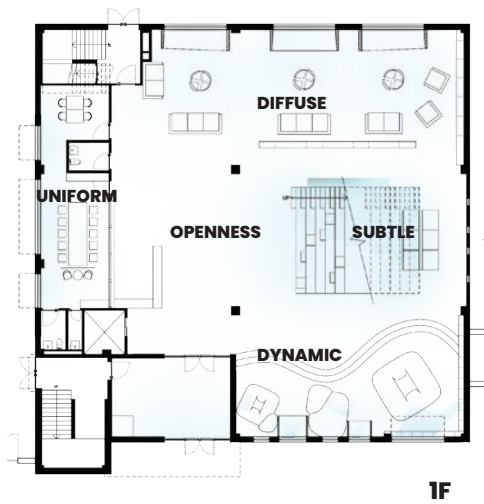
α-LED 8W/ 3000K/ 35D/ 650lm



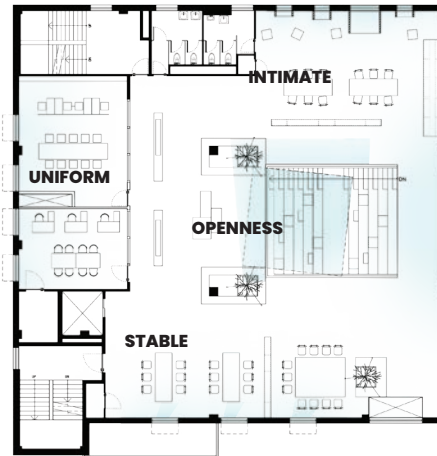
SURFACE MOUNTED LED  
-striplight with aluminum guide rail,  
frosted cover and remote LED driver  
-3000K, 1W/FT, 109lm/FT, CRI94

Staircase  
125 - 200 lux

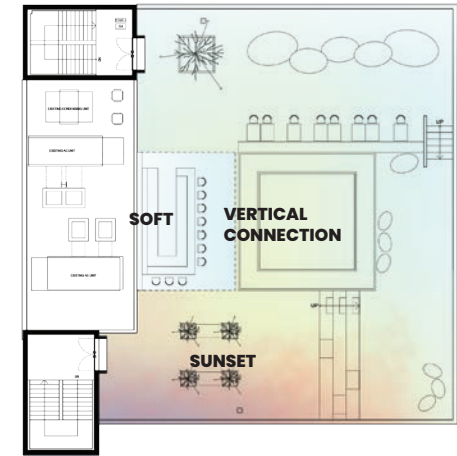
• Daylight Design Strategies



1F



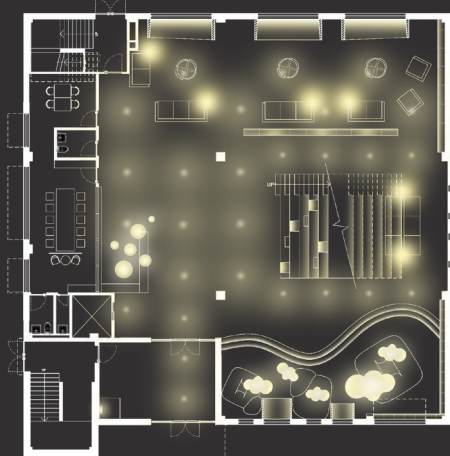
2F



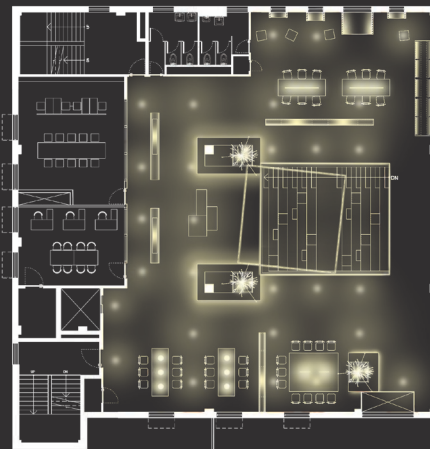
RF

Public ← -----> Personal -----> Social

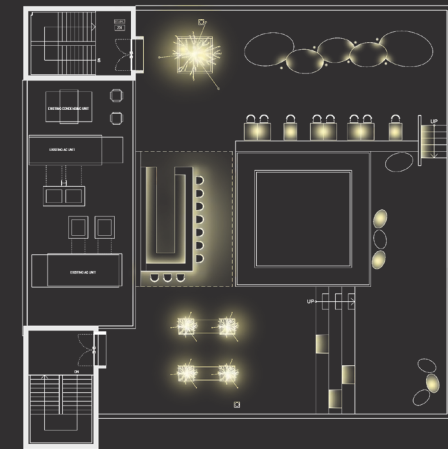
• Electric Lighting Design Strategies



1F



2F



RF

Public

Personal



SHELLY WAN-CHEN LIN







SHELLY WAN-CHEN LIN





# MET 624 JOURNEY

**Nov. 2022**

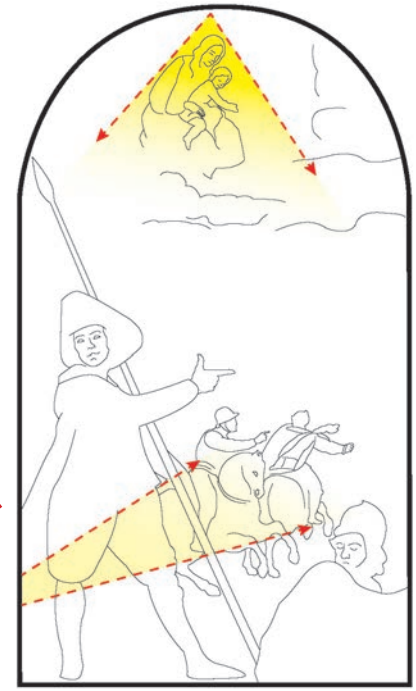
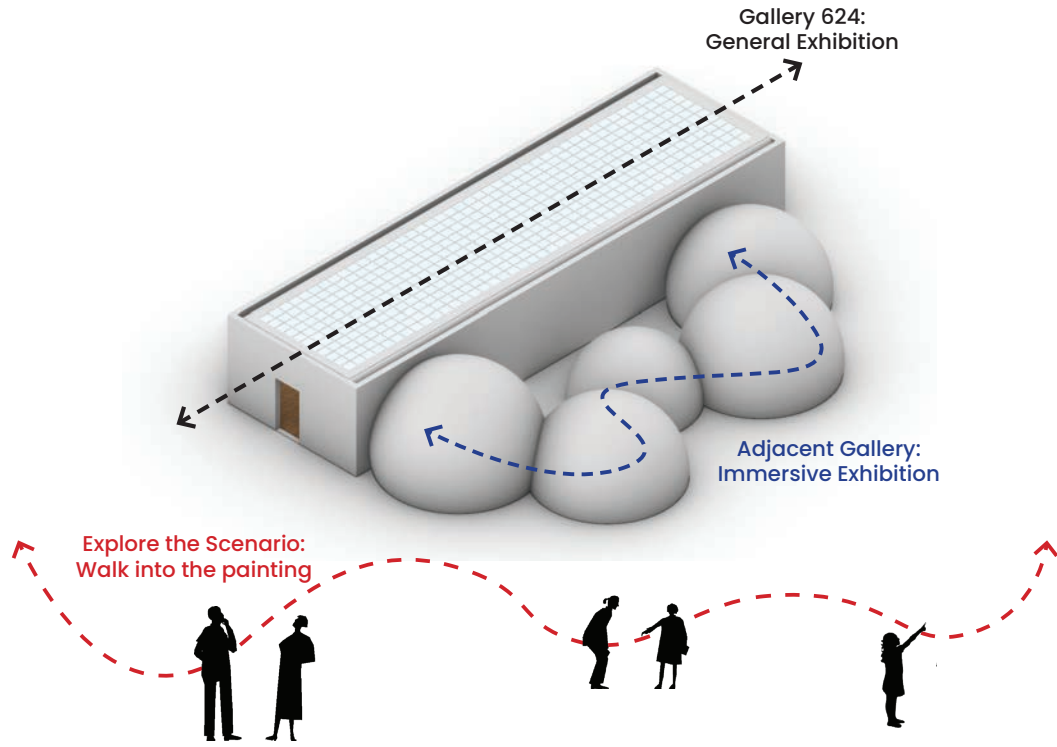
Project Type : Lighting and Exhibition design for an adjacent gallery

Course : Representation & Analysis, Fall 2022

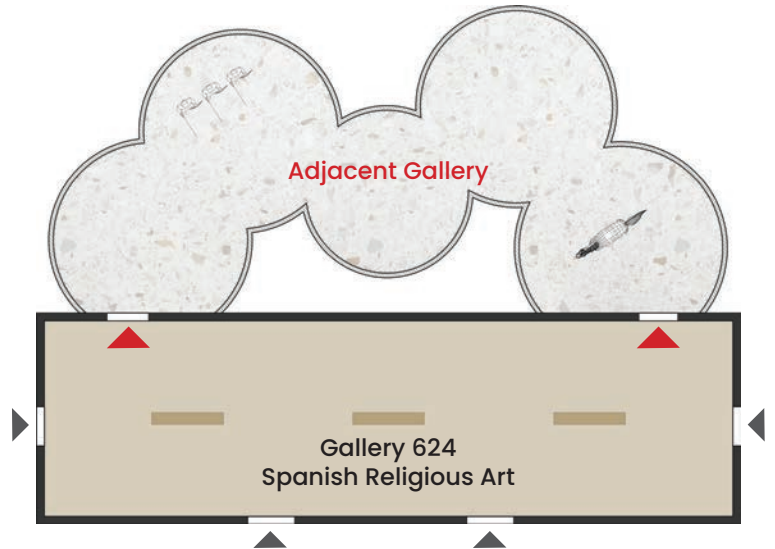
Work Type : Individual work

Design Duration : 4 weeks

• Design Concept



Gallery 624

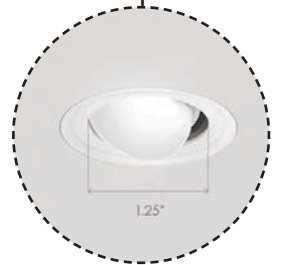
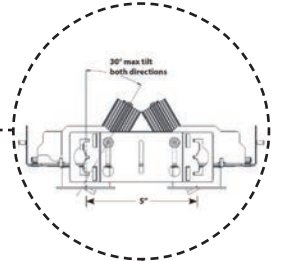


- **Electric Lighting Design**



two 1.25" Recessed Adjustable LED Downlights with 1 Remote Driver Each Head With Independent 30° Tilt and 360° Rotation

USAI Lighting - Trimmed-MIRAF-2

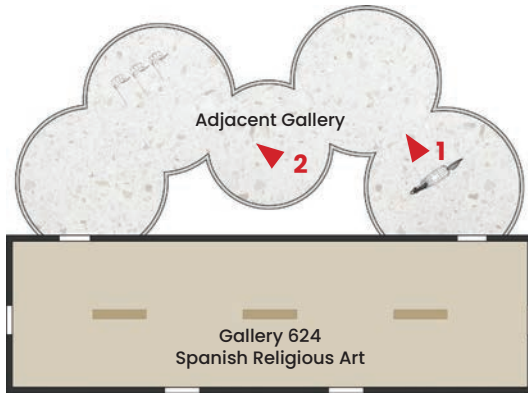


Ground-Recessed Cove Lighting



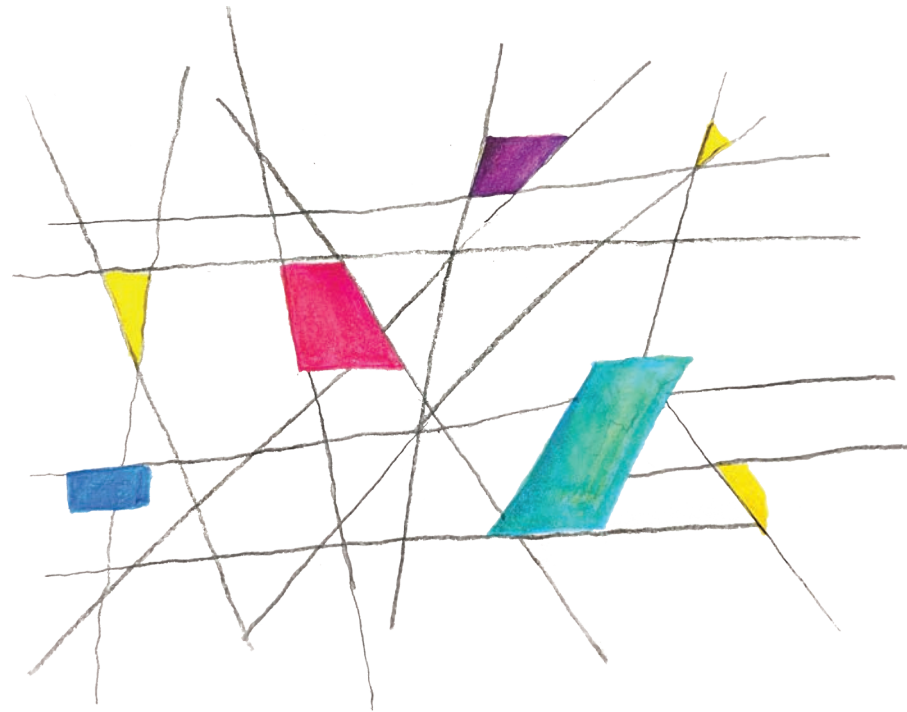
SHELLY WAN-CHIEN LIN

- Immersive Exhibition Senario



I selected THE MET Gallery 624 as my site and drew inspiration from Francisco de Zurbarán's painting, "Battle between Christians and Muslims at El Sotillo." In Zurbarán's artwork, the light emanating from the Virgin Mary symbolizes love and hope amidst darkness. To craft an immersive experience for visitors, I conceived an adjoining gallery linked to Gallery 624. Inspired by the painting's arched composition, I envisioned employing a continuous dome for the new gallery space. Within this dome, one section features ground-recessed cove lighting to accentuate its form, while other areas utilize adjustable downlights for ambient illumination.

# DAYLIGHT FLUIDITY



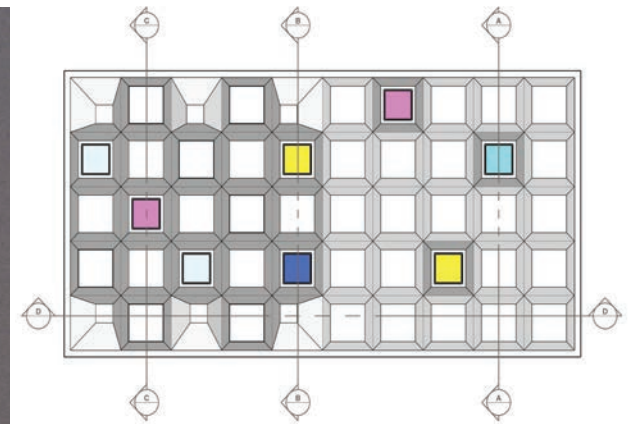
***Apr. 2023***

Project Type : Lighting design of a space with specific program

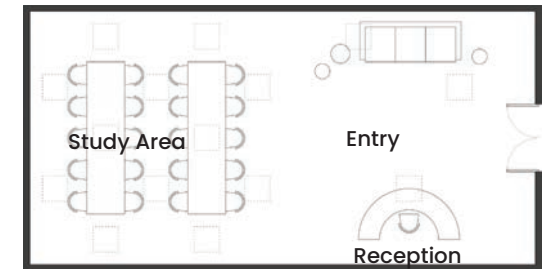
Course : Studio 2 Natural & Technological Light, 2023 Spring

Work Type : Individual work

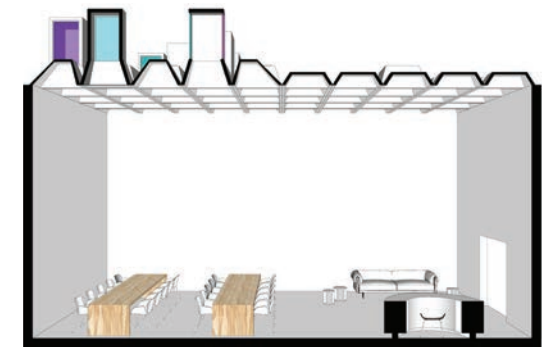
Design Duration : 3 weeks



Roof Plan



Floor Plan



Section DD'

The intention behind the design of this space is to capture the varying perspectives of daylight throughout the day and the seasons, creating a perceptually fluid environment. The choreography of the light and pyramid-shaped apertures produce a distorted light effect that engages the moving eye. To achieve this design intent, each aperture has a unique identity that contributes to the overall fluidity of the space. The entry, reception, and study areas are defined by natural light instead of partition walls, resulting in different lighting effects and transitions between spaces. The apertures on the top facade all have a similar appearance but are distinguished by their lighting identities. This use of dynamic and colorful natural light enables people to perceive the passing of time.



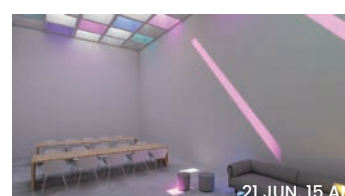
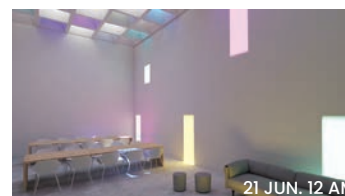
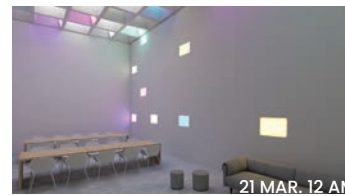
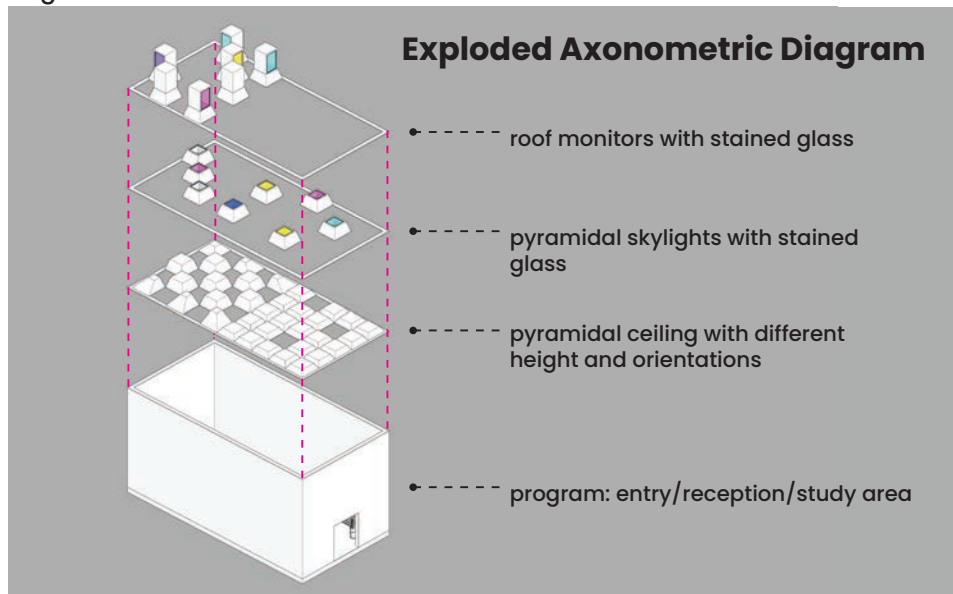
## • Design Process



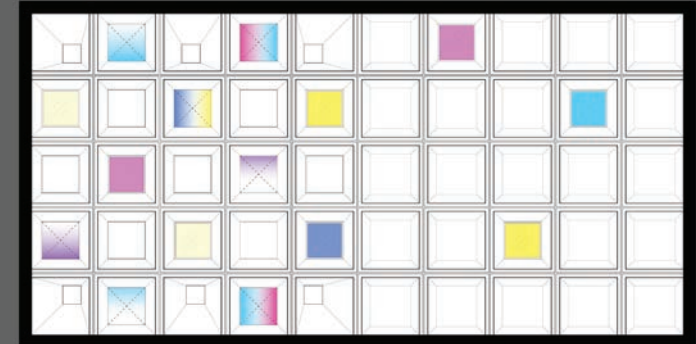
Step 1: To create sunlight from latticed apertures, determine the size and placement of the apertures based on the orientation and desired lighting effect. Consider factors such as the angle of the sun and the desired amount of light penetration. Install the apertures in a way that maximizes natural light while minimizing glare and heat gain.



Step 2: Design roof monitors with stained glass to produce a distorted natural light pattern that adds interest to the interior space. Consider the colors and patterns of the stained glass to create a desired atmosphere. Ensure that the roof monitors are properly positioned to allow natural light to enter the space at the desired angles and intensities.



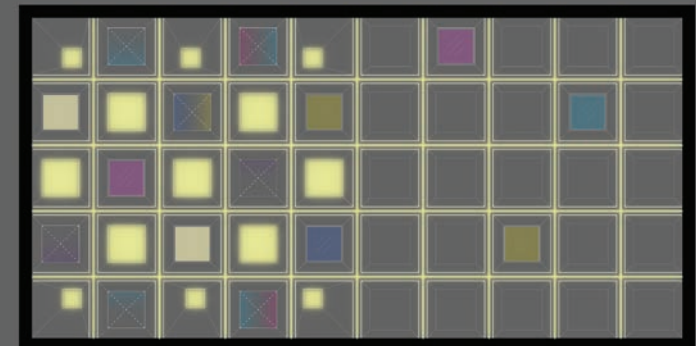
## • Lighting Layout :



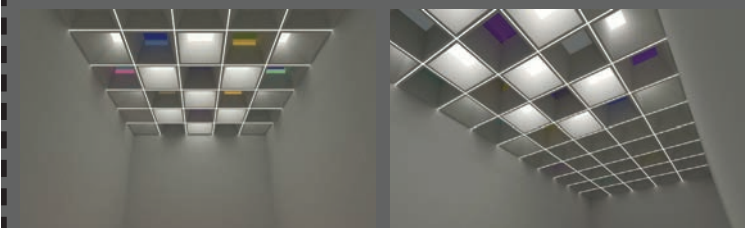
Reflected Ceiling Plan (only daylight)



## • Electric Lighting Layout :

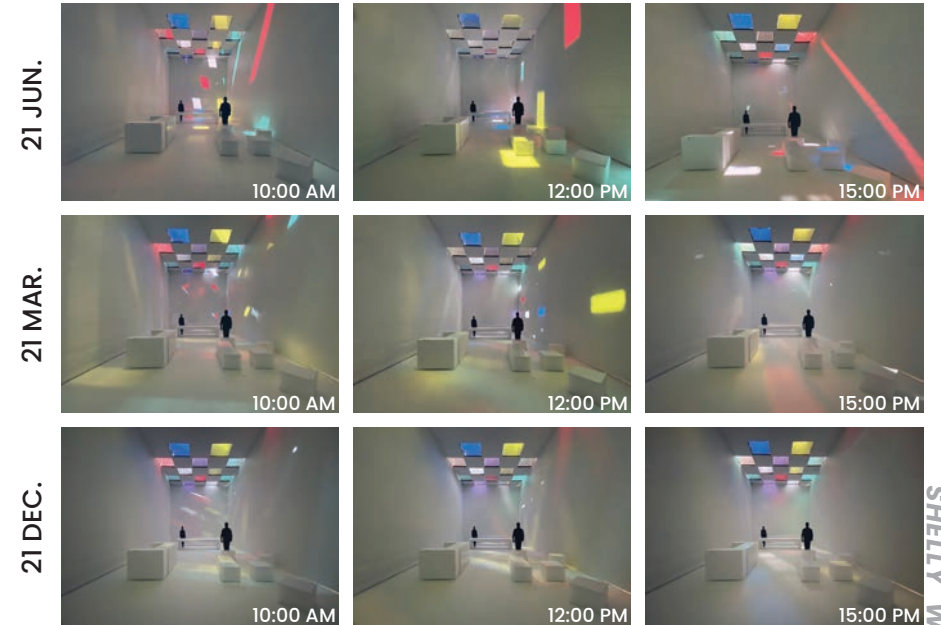
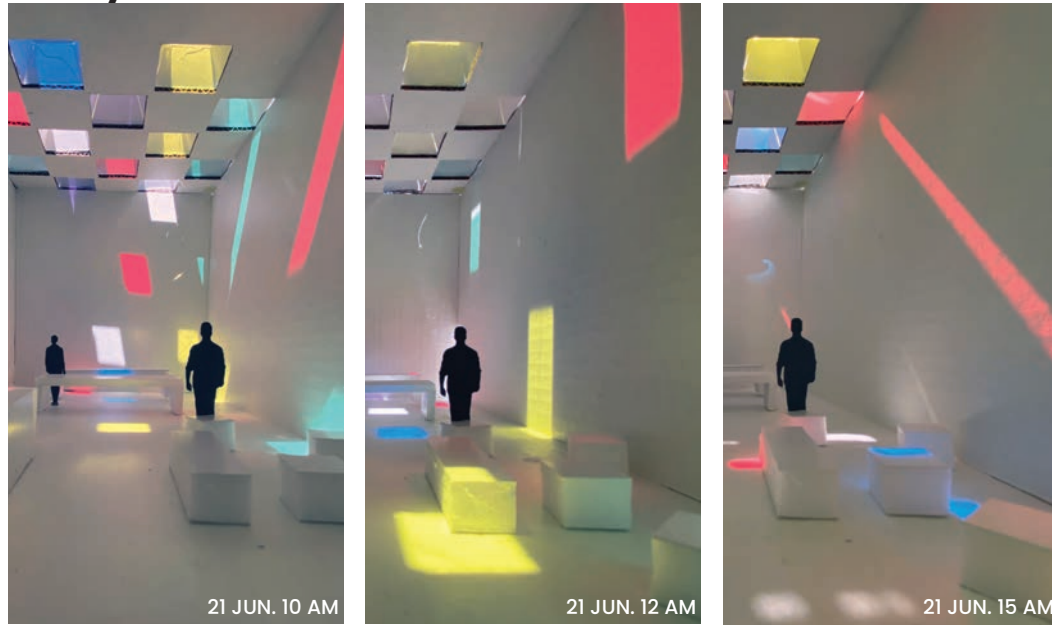


Reflected Ceiling Plan (with electric lighting)

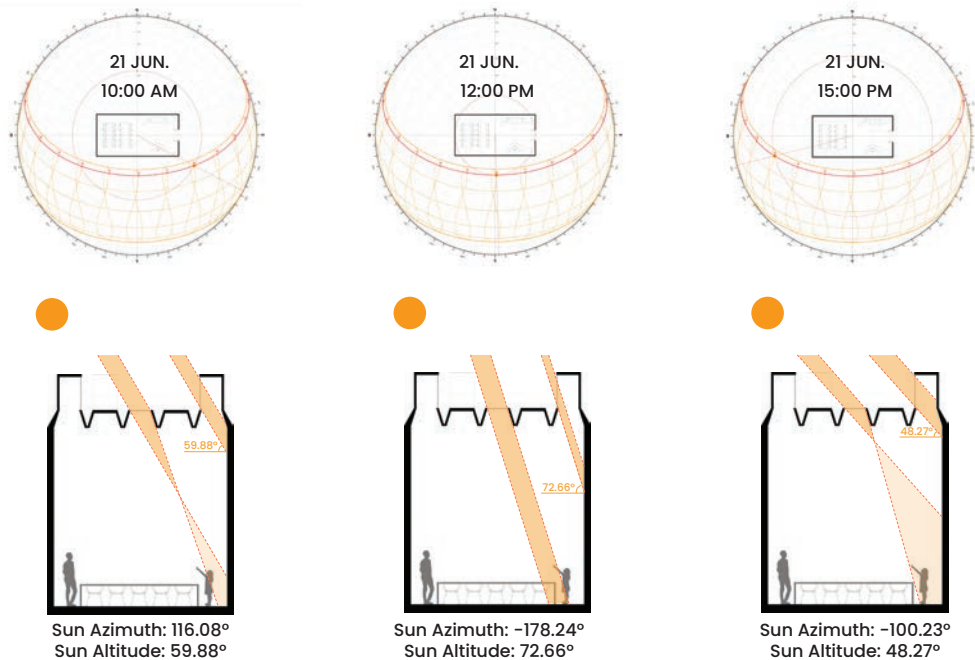




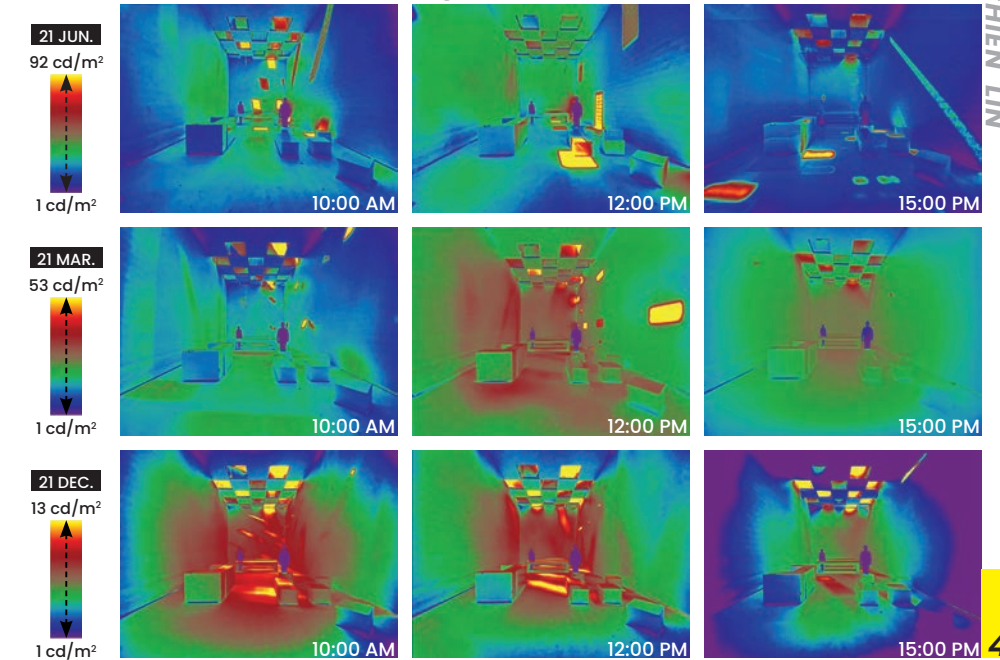
• **Physical Model Studies On Heliodon :**



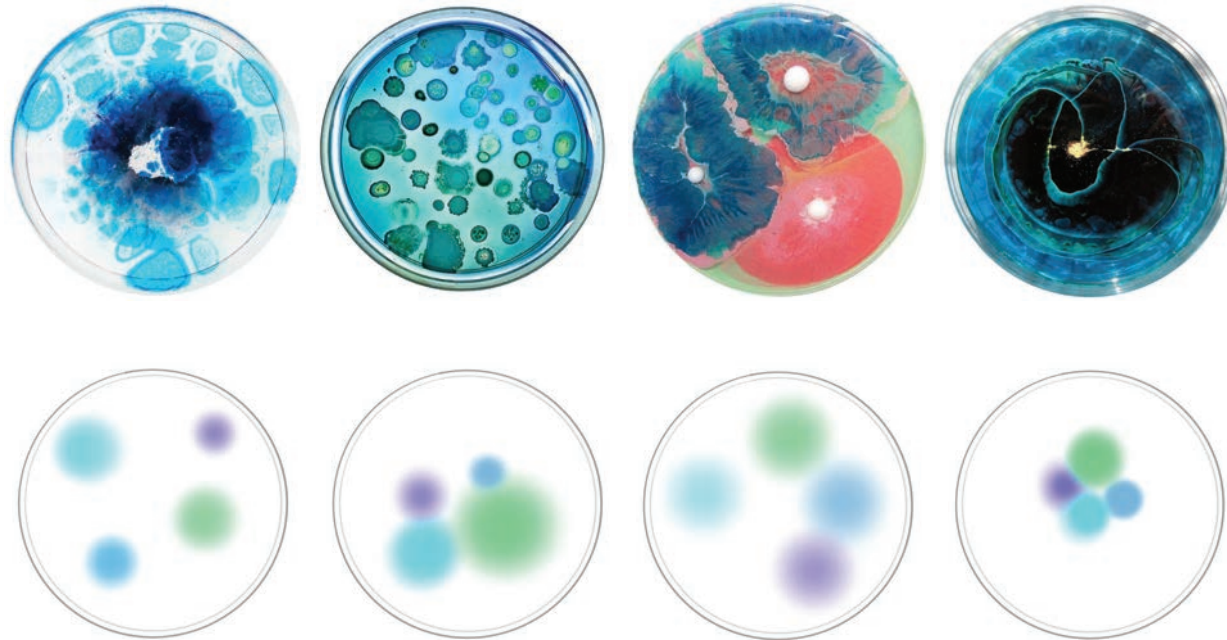
• **Solar Penetration Analysis :**



• **Luminance Mapping Analysis :**



"Our aim is to create an experimental place where young people can be transformed after their learning process. Different combinations of the same luminaires symbolize the various experiences that each individual will receive." -Hyun, Nat, Shelly



# EXPERIMENTAL LAB

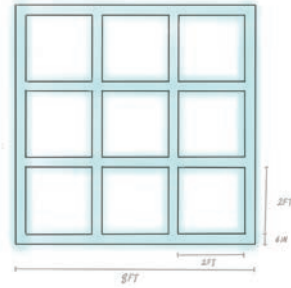
*Dec. 2023*

Project Type : Lighting design for a two-story office  
Course: Studio 1 Light, Vision, & Representation, Fall 2022  
Work Type : Teamwork (Team of Three)  
Design Duration : 6 weeks

## • Design Approach

### • Approach 1

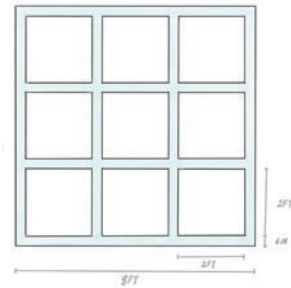
GRID / DIRECT



General: Recessed Linear LED Down luminaire  
 Manufacturer: Coronet  
 (Cat# LSRI-1'6"-40-LOW-UNV-DB-W-MW-FL)  
 Input Watts : 1.5 W/FT  
 Location : Corridor / Individual rooms

### • Approach 2

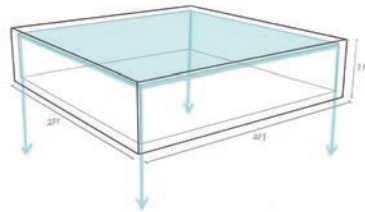
GRID / INDIRECT



General: Recessed Linear LED Down luminaire  
 Manufacturer: Coronet  
 (Cat# LSRI-1'6"-40-LOW-UNV-DB-W-MW-FL)  
 Input Watts : 1.5 W/FT  
 Location : Individual rooms

### • Approach 3

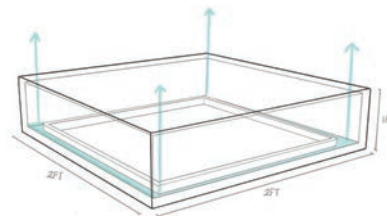
SQUARE / DIRECT



General: LED panel  
 Manufacturer: Cooledge  
 (Cat# TILE INT-150-40)  
 Input Watts : 1.3 W/FT<sup>2</sup>  
 Location : Extrude cube

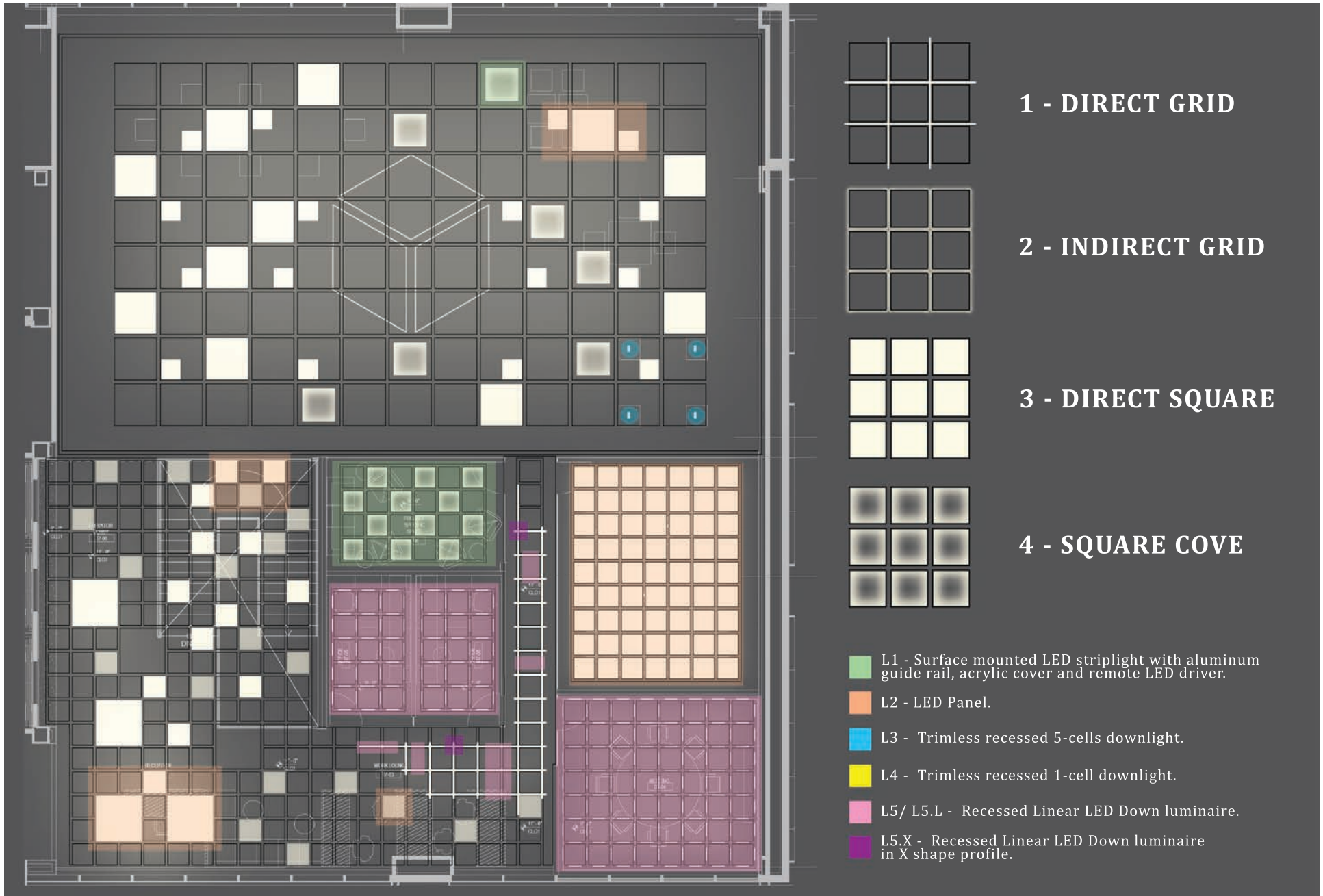
### • Approach 4

SQUARE / INDIRECT / COVE

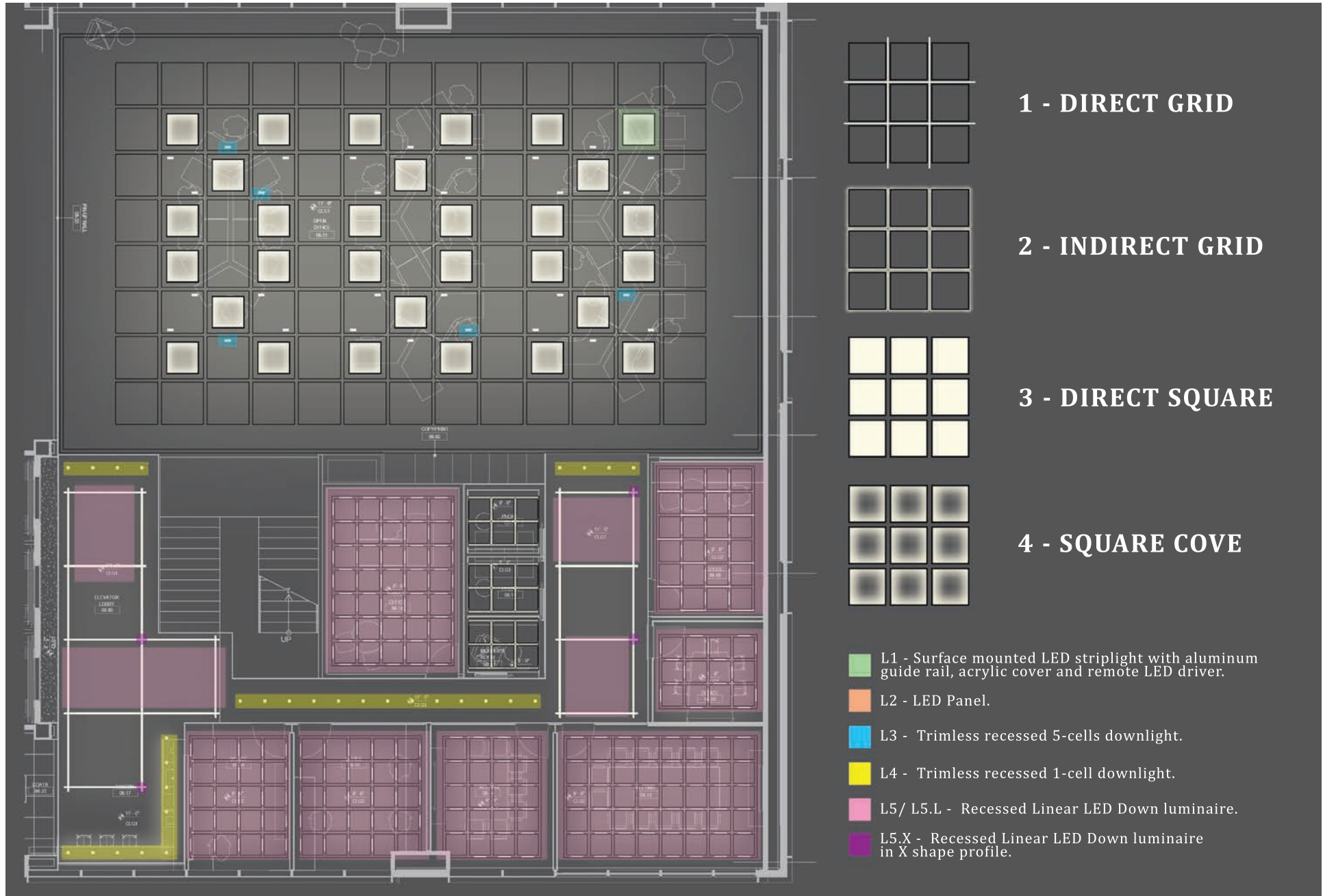


General : Surface mounted LED  
 striplight with aluminum guide rail, acrylic cover and  
 remote LED driver.  
 Manufacturer : Q Tran LED  
 (Cat# SW-HE24/1.5-DRY-40)  
 Input Watts : 1.5 W/FT  
 Location : Cove Ceiling

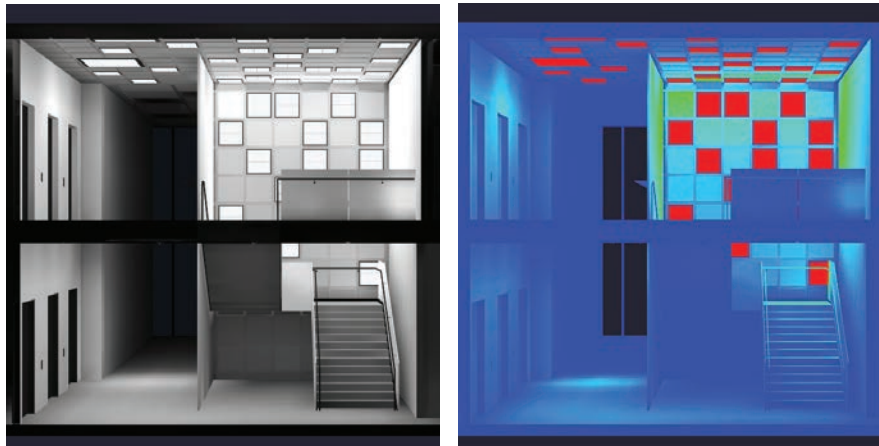
• **Lighting Layout: Upper Level Plan**



• **Lighting Layout: Lower Level Plan**



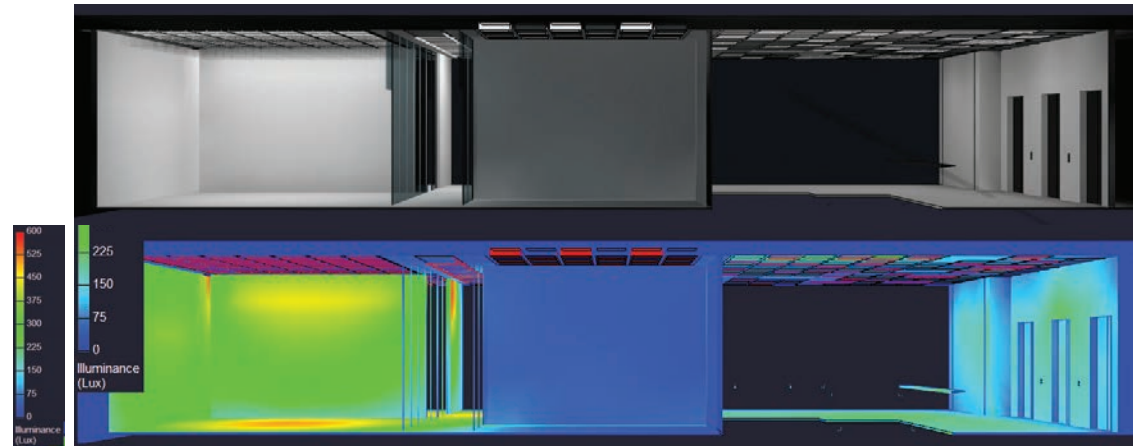
# • Design Criteria & Rendered View



Stairs

Our aim is to create an experimental place where young people can be transformed after their learning process. Different combinations of the same luminaires symbolize the various experiences that each individual will receive.

	IES Illuminance Recommendation				LPD (space by space)	Comcheck	Lighting Mood	Design Scheme
	Horizontal Targets		Vertical Targets					
	<25	25-65	<25	25-65				
Office(Enclosed)	400		75		0.85	0.9	focus	Approach 1
Meeting Room	300		100		0.93	1.11	focus, social	Approach 1
VR (video game room)	10	20	2	4	1.16	1.54	focus, entertain	Approach 1
Pantry	300		-		0.92	1.09	bright, warm	Approach 1 / Downlight
Phone Booth (social lounge)	100		50		0.44	0.66	dim, relax	Approach 2
Mother's room (changing room)	50		100		0.44	0.66	relax, comfortable, warm CCT	Approach 2
Entrance	40		20		0.9	0.81	experimental feeling	Approach 3
Reception Desk	200	400	75	150	0.9	0.81	welcoming	Approach 3
Workshop	500		250		1.09	1.43	experimental feeling	Approach 3
Stair	100		50		0.5	0.62	experimental feeling	Approach 3 (ceiling & wall)
Counseling	150		75		0.53	1.12	comfortable, relax, social	Approach 4
Office(Open space)	400		75		0.78	0.81	comfortable, even brightness	Approach 4 / Downlight
Waiting Area	100	200	50	100	0.38	0.49	experimental feeling	Approach 1 & 3
Corridor (circulation)	50		20		0.58	0.59	extending, show the direction	Approach 1 & 3
Exhibition (low light setting)	75	150	37.5	75	0.61	0.95	dramatic, Inspiring, Interaction	Approach 3 & 4 / Downlight (different size)
Lounge (social)	50	100	25	50	0.44	0.66	comfortable, relax, social	Approach 3 & 4 (different size)



Meeting room Corridor Office Corridor



Open office



Exhibition Space



SHELLY WAN-CHEN LIN





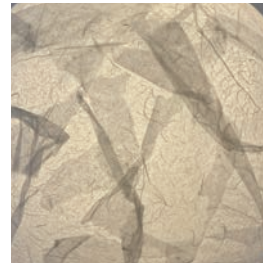
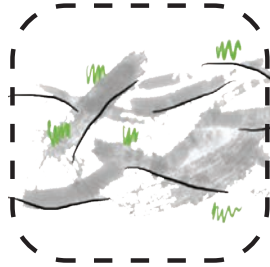
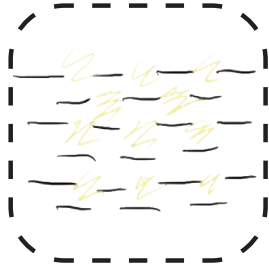
# THE LUMINA CHRONICLES

***Dec. 2023***

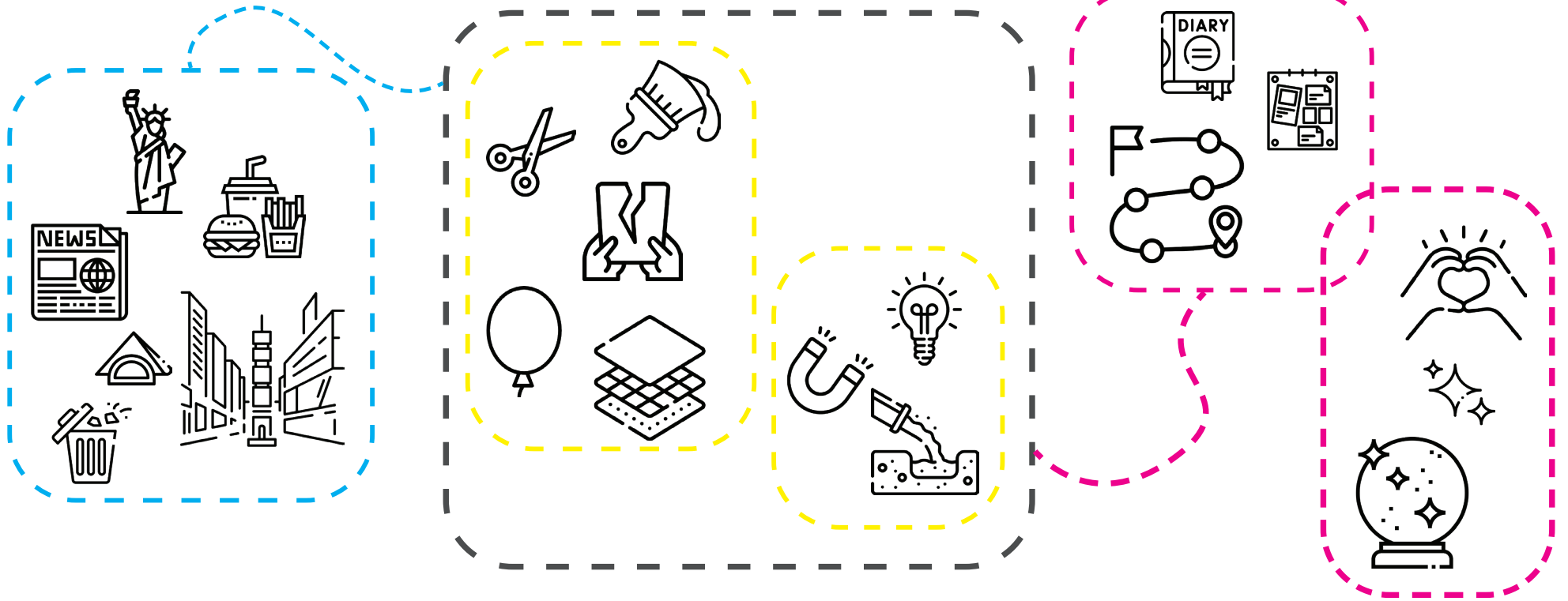
Project Type : Luminous objects design  
Course : The Luminous Object, 2023 Fall  
Work Type : Individual  
Design Duration : 3 months

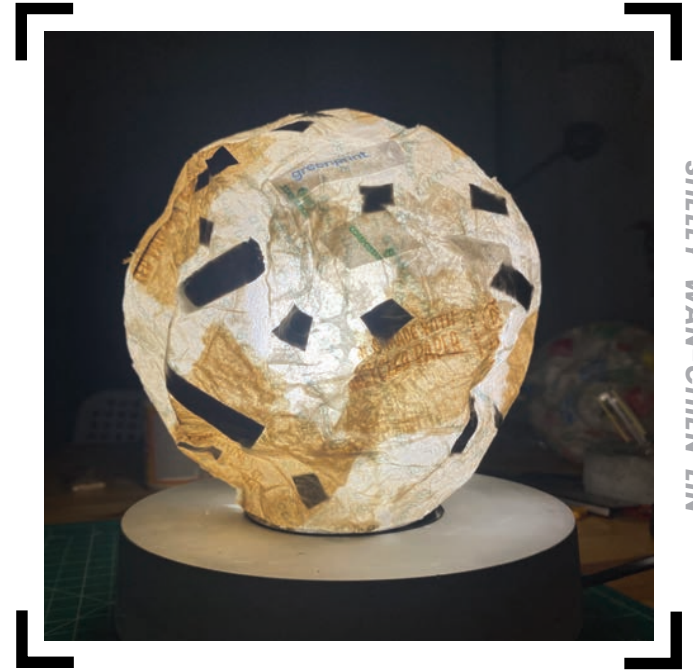


• Design Concept



• Assembly Instructions





SHELLY WAN-CHIEN LIN



SHELLY WAN-CHIEN LIN

# BIO-SHIMMER

*Mar. 2023*

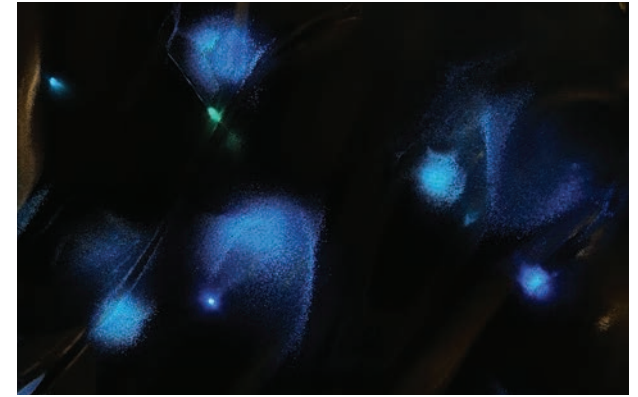
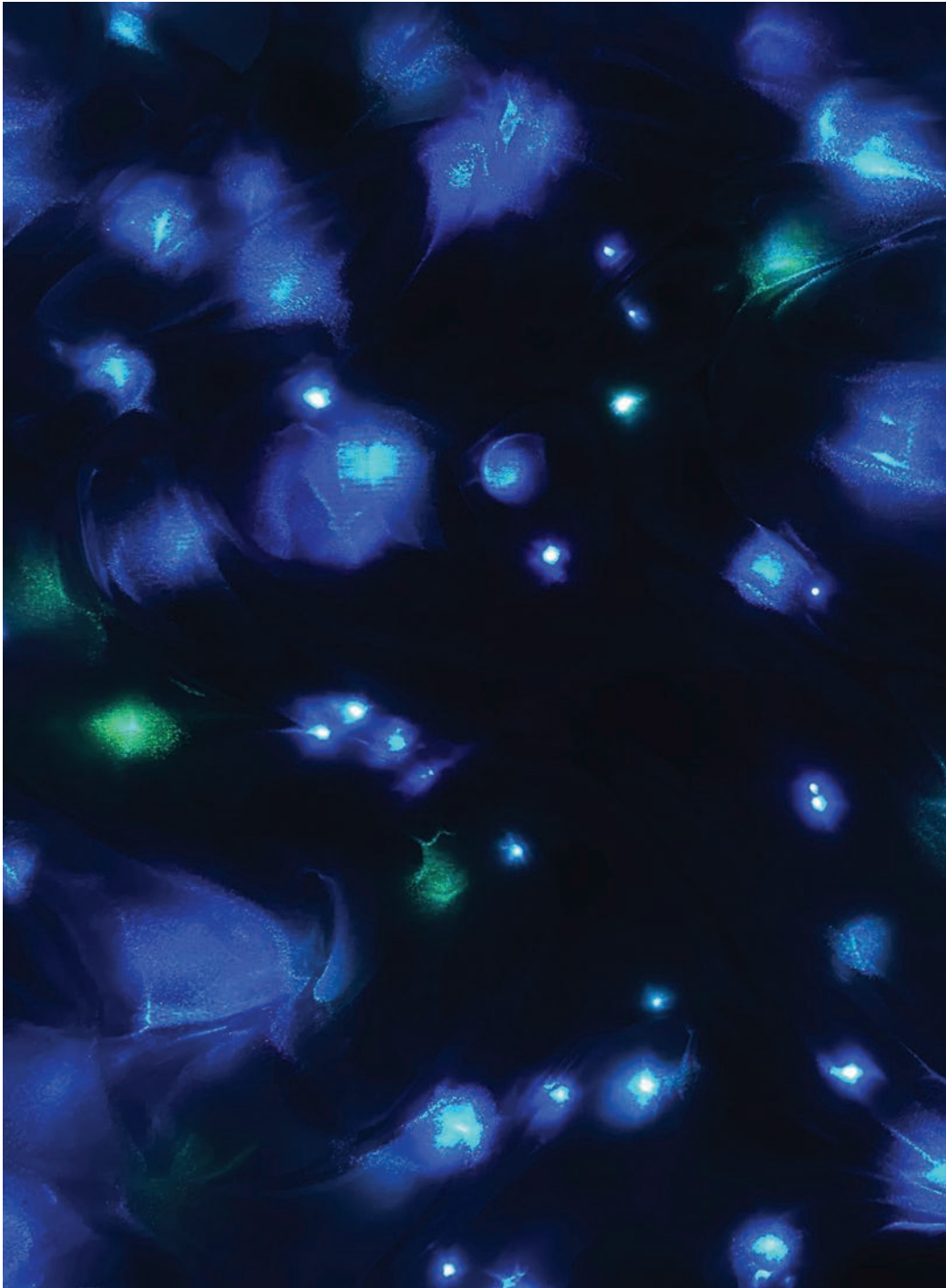
2023 IESNYC Student Lighting Design Competition

**\*\*Honorable mention**

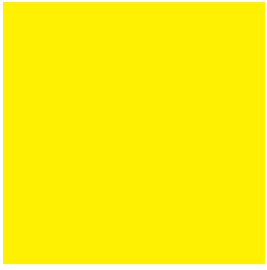
Project Type : Art installation

Work Type : Individual work

Design Duration : 4 weeks



Bioluminescent dinoflagellates, small single-celled organisms in the ocean, rely on sunlight to establish their circadian rhythm, showing how light plays a role in the cycle of life. Bioluminescence is a chemical reaction that occurs when luciferin reacts with oxygen, resulting in the emission of bioluminescence by living organisms. As a result, bioluminescent plankton glows and shimmers with the flowing seawater at night. Dinoflagellates synthesize luciferin independently and produce bluish-green light in the dark under the rhythm of a 24-hour light cycle. The light emitted by bioluminescence demonstrates the sleep-wake cycles of microorganisms. This project sheds light on how sea sparkles illuminate the ocean and the interdependent relationship between these tiny marine organisms and light. With a circle of light, eternal life's cycle is in sight.



# PROFESSIONAL WORKS



**SAKO Architects:** Project Manager/Architect  
2016.12-2020.05

**Subtropics Studio:** Co-Founder  
2020.06-2021.12



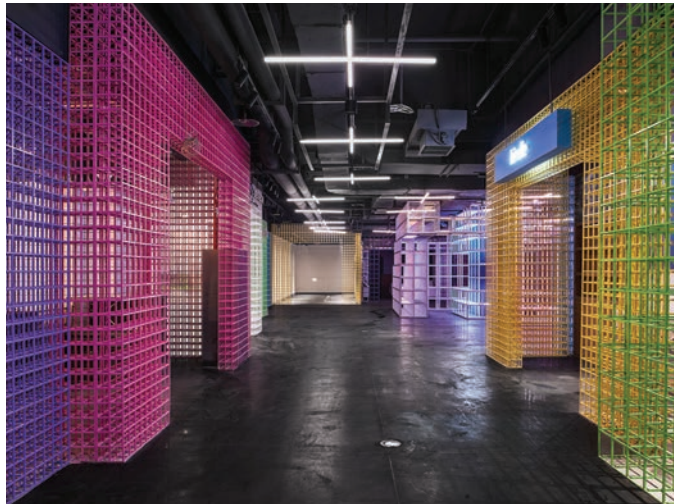
## KALEIDOSCOPE in Tianshui 2019-2020

Project Type: Kindergarten  
Location: Tianshui, China  
Company: SAKO Architects



## WARP in Chongqing 2017-2018

Project Type: Theme mall  
Location: Chongqing, China  
Company: SAKO Architects





## LINES in Shanghai



2019

Project Type: Interior of office building  
Location: Shanghai, China  
Company: SAKO Architects

## SHANGRI-LA in Oita



2019-2020

Project Type: Outdoor playground  
Location: Oita, Japan  
Company: SAKO Architects



2019

Project Type: Kindergarten  
Location: Shanghai, China  
Company: SAKO Architects

## Unbuilt/ Under construction Projects



2018

Project Type: Hybrid building  
Location: Quanzhou, China  
Company: SAKO Architects



2019

Project Type: Office building  
Location: Wuhan, China  
Company: SAKO Architects



2019-2020

Project Type: Hybrid Building  
Location: Fukuoka, Japan  
Company: SAKO Architects

## New Resilient Grouds

2020

Project Type: Exhibition Design

Location: Tainan, Taiwan

Company: Subtropics Studio



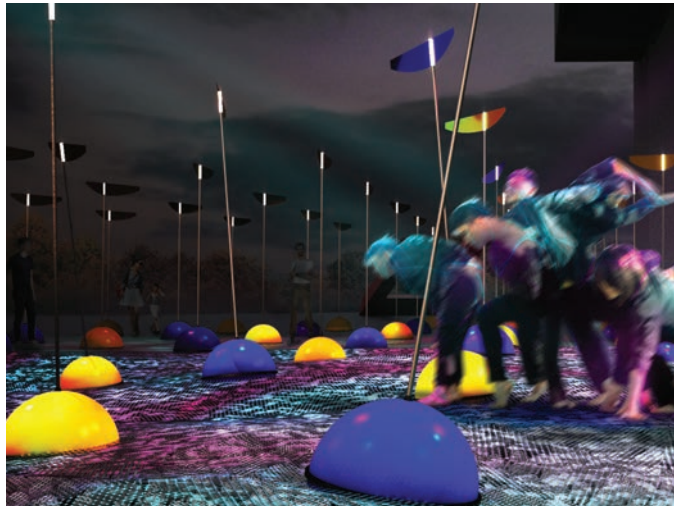
## Ground Control Plan

2020

Project Type: Taipei Fine Art Museum X-site Competition

Location: Taipei, Taiwan

Company: Subtropics Studio



## Dante Cafe' in Taipei

2021

Project Type: Interior Design

Location: Taipei, Taiwan

Company: Subtropics Studio



SHELLY WAN-CHIEN LIN